

# Chapter 1: FIRST-YEAR SURVEY

*Who takes it?*

All first-year students who start in the fall semester are offered to take the survey.

*When is it administered?*

It was administered during Truman Transformation, which is the first three days of school for the first-year students.

*How long does it take for the faculty to complete the instrument?*

15 to 25 minutes.

*What office administers it?*

The Student Success Center in conjunction with the Provost's Office administers the survey.

*Who originates this survey?*

The survey is a local instrument prepared by Truman faculty and administrators.

*When are results typically available?*

Late fall.

*What type of information is sought?*

The survey provides information on the student's perception of the admission process, summer orientation, and expectations of college. It also provides some basic demographic information on first-generation status and family income.

*From who are the results available?*

The Director of the Center for Academic Excellence

*To whom are the results regularly distributed?*

Results are available to the University community through this almanac, and available by request from the Director of the Center for Academic Success.

*Are the results available by department or discipline?*

Neither

*Are the results comparable to data of other universities?*

No.

## FIRST YEAR SURVEY 2016

The first-year survey is a short survey given to all students during new student orientation. It allows a better understanding of student demographics and expectations. In 2016, 920 students completed the survey. The following highlights some of the most relevant findings.

### Choosing Truman

Prior to admission, more than 83% of students had visited more than one college, and over 97% of respondents visited Truman State's campus at least once as part of the admission process.

### Demographics

About 11% identified themselves as upper class, 28% as upper middle class, 23% as middle class, 23% as working class, and 15% as lower class.

### Expectations

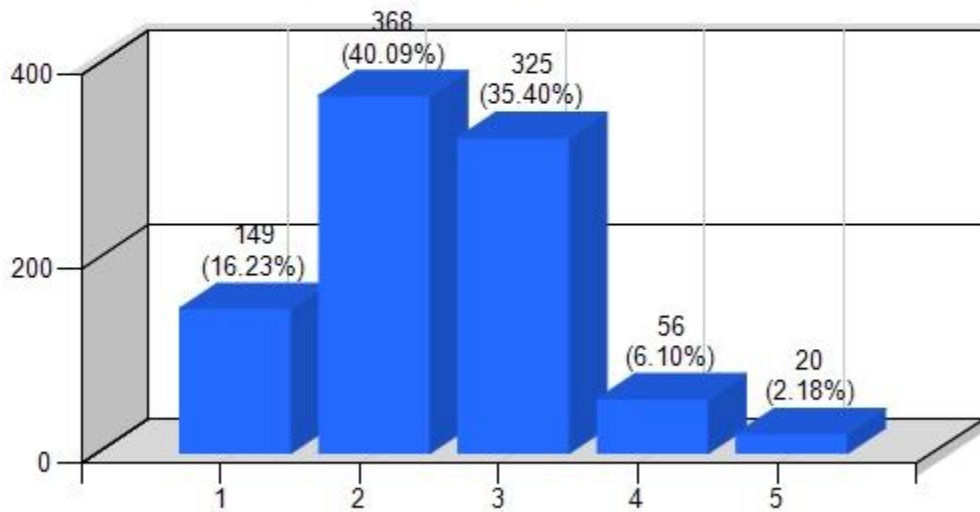
Over 98% of respondents expect to graduate Truman knowing at least one faculty member well enough to ask for a letter of recommendation. The most common expectation for first semester grades was A-/B+. Fewer than 0.2% of students expect to average lower than a B. Over 90% of students reported having a strongly positive or a positive attitude towards Truman at the time of the survey. Less than 2% of students reported having a negative attitude towards Truman at the time of the survey.

### Experiences with Truman Transformation

New student orientation changed substantially from 2015 to 2016. Students had less time total and somewhat less contact with faculty. Therefore, understanding their experiences was especially important. Almost 92% of students felt that Truman Transformation was helpful in introducing them to faculty and staff (with the majority being about 40% feeling Truman Transformation was just helpful). More than 92% of students felt that Truman Transformation was helpful in connecting them with fellow students (roughly 34% of students felt Truman Transformations was very helpful).

---

**How well did Truman Transformation do at introducing you to faculty and staff?  
(918 Responses)**

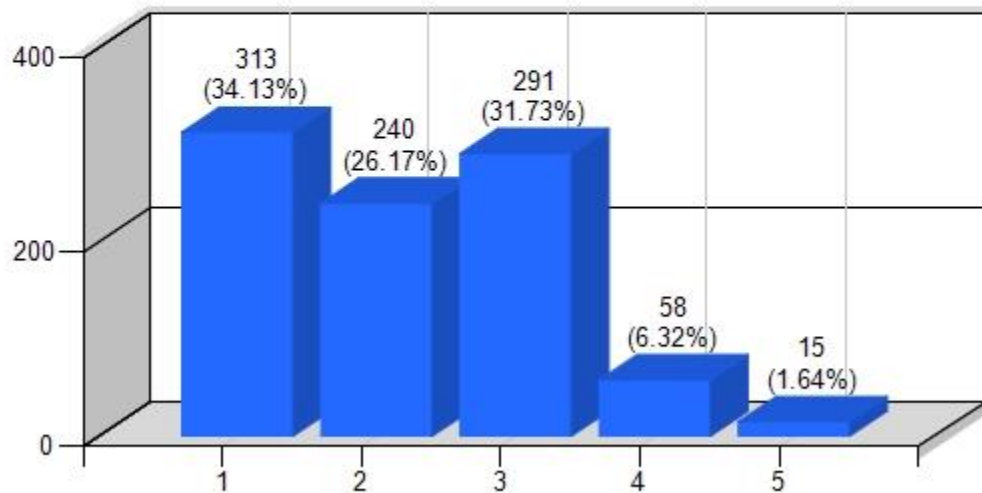


1 represents a 'very helpful', 2 represents 'helpful', 3 represents 'somewhat helpful', 4 represents 'unhelpful' and 5 represent 'very unhelpful'

---

---

**How well did Truman Transformation help you get connected to your fellow students?  
(917 Responses)**



1 represents a 'very helpful', 2 represents 'helpful', 3 represents 'somewhat helpful', 4 represents 'unhelpful' and 5 represent 'very unhelpful'