

**AGENDA**  
***STRATEGIC PLANNING and ASSESSMENT***  
***WORKSHOP***  
**Truman State University**  
**Wednesday, July 9, 2008**

**8:00-8:30 a.m. Registration** – Lobby, Violette Hall (VH) vicinity of VH 1000, light refreshments and pastries provided

**8:30-8:35 a.m. Welcome and Introduction** – James Guffey, President of Faculty Senate, VH 1000

**8:35-8:40 a.m. Remarks** – Troy Paino, Provost & Vice President for Academic Affairs, VH 1000

**8:40-8:45 a.m. Remarks** – President Barbara Dixon, VH 1000

**8:45-9:45 a.m. Presentation and Discussion “Truman’s Strategic Environment”- An Overview of Environment and Related Census Data, Assessment Data and Enrollment Information with Follow-Up Questions** – Michael McManis, University Dean, Planning and Institutional Development; Doug Davenport, Dean, College of Arts and Sciences; Glenn Wehner, Chair, Assessment Committee and Professor of Animal Science; and, Gina Morin, Associate Vice President for Enrollment Management, VH 1000

**9:45-10:00 a.m. Break**

**10:00-11:00 a.m. Presentation of Major Findings of Truman’s Pricing and Positioning Study with Follow-Up Questions** – David Strauss, Principal, and Susan May, Managing Associate, Art & Science Group, VH 1000

**11:10–11:50 a.m. Breakout Discussions Session I – “Coming to Terms with Truman’s Challenges” - Conversations Regarding the Strategic Environment and the Art & Science Group Findings**

- A. VH 1140 Bertha Thomas, Assistant Dean of Multicultural Affairs, and Laura Bates, Program Coordinator, Multicultural Affairs
- B. VH 1144 Gina Morin, Associate Vice President for Enrollment Management
- C. VH 1146 Dave Lusk, Assistant Dean of Student Affairs
- D. VH 1148 Brenda Higgins, Director, Student Health Center
- E. VH 1208 Terry Olson, Chair, Department of Economics
- F. VH 1216 Dana Delaware, Chair, Department of Chemistry
- G. VH 1224 Amber Johnson, Chair, Department of Anthropology, Geography and Sociology

**12:00–12:50 p.m. Lunch** – Georgian Room, Student Union Building

**1:00–2:30 p.m. Presentation and Discussion: Art & Science Group Report of Recommendations and Truman’s Initial Follow-Up Actions** - David Strauss and Susan May, VH 1000

**1:00-2:00 p.m. Part I: Art & Science Group Report and Follow-up Questions**

**2:00-2:30 p.m. Part II: Short Progress Reports on Working Groups including Questions**

- 1. Campus Life, Spirit and Fun** - Lou Ann Gilchrist, Dean of Student Affairs, and Julia DeLancey, Associate Professor of Art
- 2. Administrative Effectiveness** - Dave Rector, Executive Director of Institutional Research and Budgets
- 3. Enrollment Management** - Gina Morin and Melody Chambers, Director of Admission
- 4. Kirksville Community Relations** - Michael McManis and Royce Kallerud, Associate Professor of English

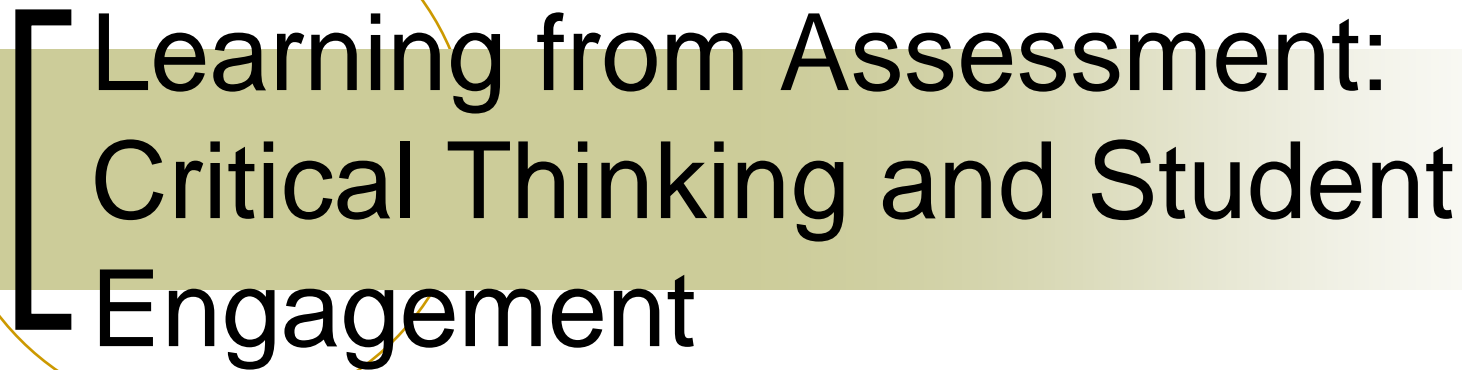
**2:30-2:45 p.m. Break**

**2:45–3:45 p.m. Breakout Discussions Session II – Conversations about “Options for Moving Truman Forward”** NOTE: You may attend any group of your choice.

- A. Commission on Undergraduate Curriculum’s Listening Post**, Melissa Holcomb, Assistant Professor of Nursing and Patricia Mickey, Assistant Professor of Music, VH 1140
- B. Curricular Innovation: Service Learning and Linked Courses**, Kelsey Aurand de Razo, Americorps/VISTA for Service Learning; Candy Young, Professor of Political Science; and Dereck Daschke, Chair, Department of Philosophy and Religion, VH 1144
- C. Curricular Innovation: Possible New Majors and Minors – Meeting Needs and Opportunities for Growth**, Sam Minner, Dean of the School of Health Sciences and Education, VH 1146
- D. Student Senate: Next Year’s Agenda**, Lizz Enfeld, President, Student Senate and Brett Wiley, Vice President, Student Senate, VH 1148
- E. Staff Council: Staff’s Role in Recruitment and Retention**, Linda Davenport, Chair, Staff Council and Polly Matteson, Career Coordinator, VH 1216
- F. Campus Life, Spirit and Fun**, Lou Ann Gilchrist and Julia DeLancey, VH 1224
- G. Administrative Effectiveness: Stopping “the Truman Shuffle,”** Dave Rector, VH 1308
- H. Enrollment Management, Financial Aid, and Transfer Students**, Gina Morin and Melody Chambers, VH 1332
- I. Kirksville Community Relations**, Michael McManis and Royce Kallerud, VH 1324

**3:45–4:30 p.m. Plenary Discussion Panel: “Options for Moving Truman Forward—Being Both Bold and Effective”** - Conversation with Discussion Group Chairs and Art & Science Group Consultants

**4:30 p.m. Adjournment**

A decorative graphic consisting of a thin yellow circle on the left side, partially overlapping a horizontal bar that is light green on the left and white on the right. The main title text is centered within this bar.

# Learning from Assessment: Critical Thinking and Student Engagement

Strategic Planning and  
Assessment Workshop

July 9, 2008

# [ The Centrality of Critical Thinking ]

- Institutional and programmatic learning outcomes emphasize critical thinking.
- Faculty overwhelmingly report that critical thinking is an essential skill (HERI, 2005).
- We directly and indirectly assess critical thinking through a variety of assessment instruments.
- What do these assessments indicate?

# Collegiate Learning Assessment (CLA) 2006-2007

	Freshmen	Seniors
Performance Task	At	Below
Analytic Writing Task	At	At
Make an Argument	At	At
Critique an Argument	At	Below
Total Score	At	Below

Actual performance compared to expected performance.

“Below” = one standard deviation below the expected score.

# Measures of Academic Proficiency and Progress (MAPP)

	Proficient	Marginal	Not Proficient
Reading, Level 1	97%	2%	2%
Reading, Level 2	82%	10%	8%
Critical Thinking	30%	37%	32%

# Portfolio Project Critical Thinking Scores

	2004	2005	2006	2007
No Evidence	5.1%	3.4%	3.3%	4.7%
Weak	28.8	26.3	21.6	27.5
Competent	40.5	46.2	39.9	42.6
Strong	25.6	24.1	35.3	25.3

# College Student Experience Questionnaire (CSEQ)

	Very Little	Some	Quite a Bit	Very Much
Gains in Analytical Thinking	3%	27%	43%	27%
Gains in Synthesizing Ideas	2%	26%	44%	27%



# Graduating Student Questionnaire (GSQ)

How adequately has your major prepared you in ability to think critically?

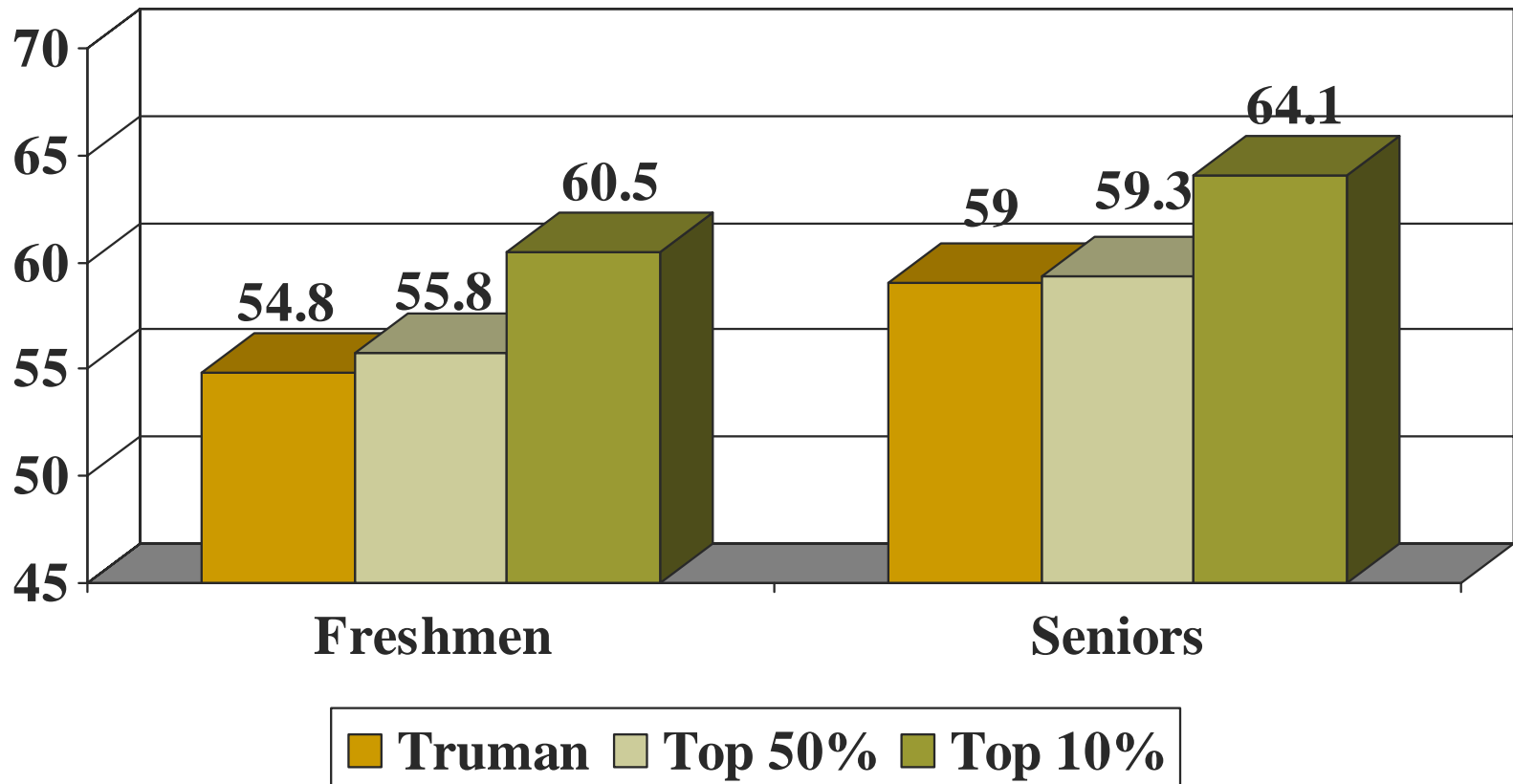
	2005-06	2006-07
Very Inadequately	1%	< 1%
Inadequately	3%	5%
Adequately	37%	36%
Very Adequately	60%	59%

# Engagement and Learning

- Engagement is central to enhancing deep student learning.
- The National Survey of Student Engagement (NSSE) examines five aspects of engagement referred to as “benchmarks”.

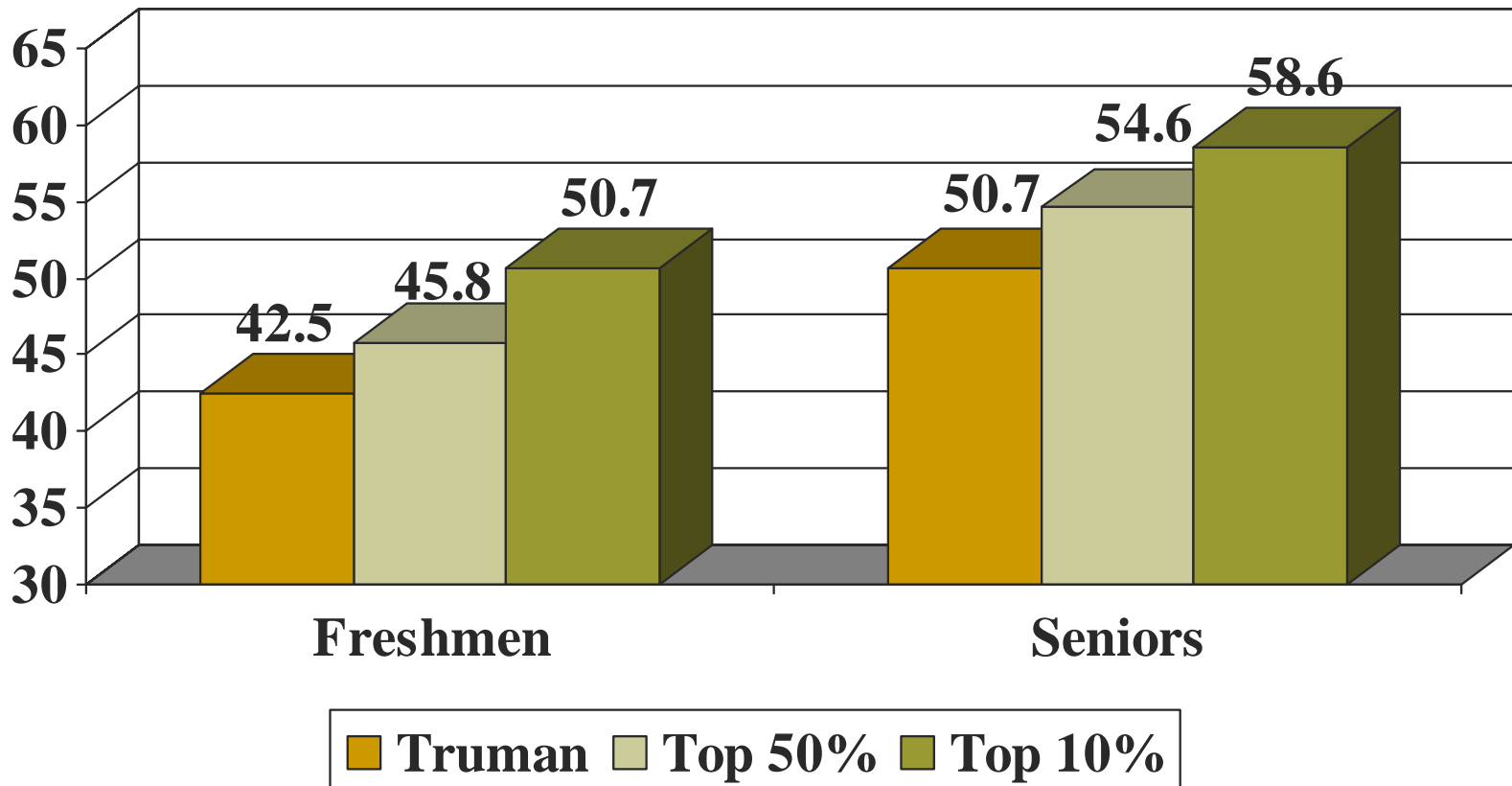
# NSSE 2006 Benchmarks

## Level of Academic Challenge



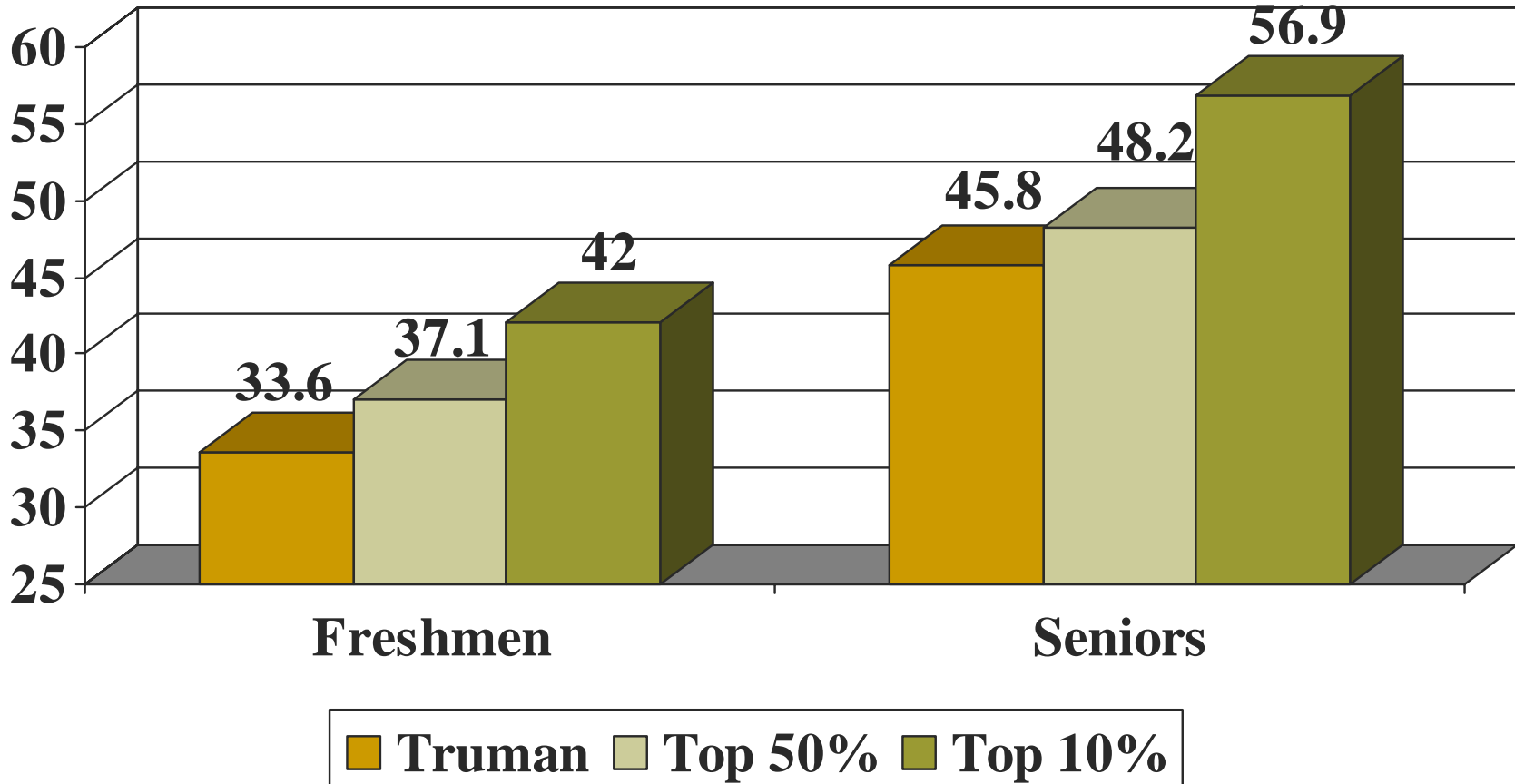
# NSSE 2006 Benchmarks

## Active and Collaborative Learning



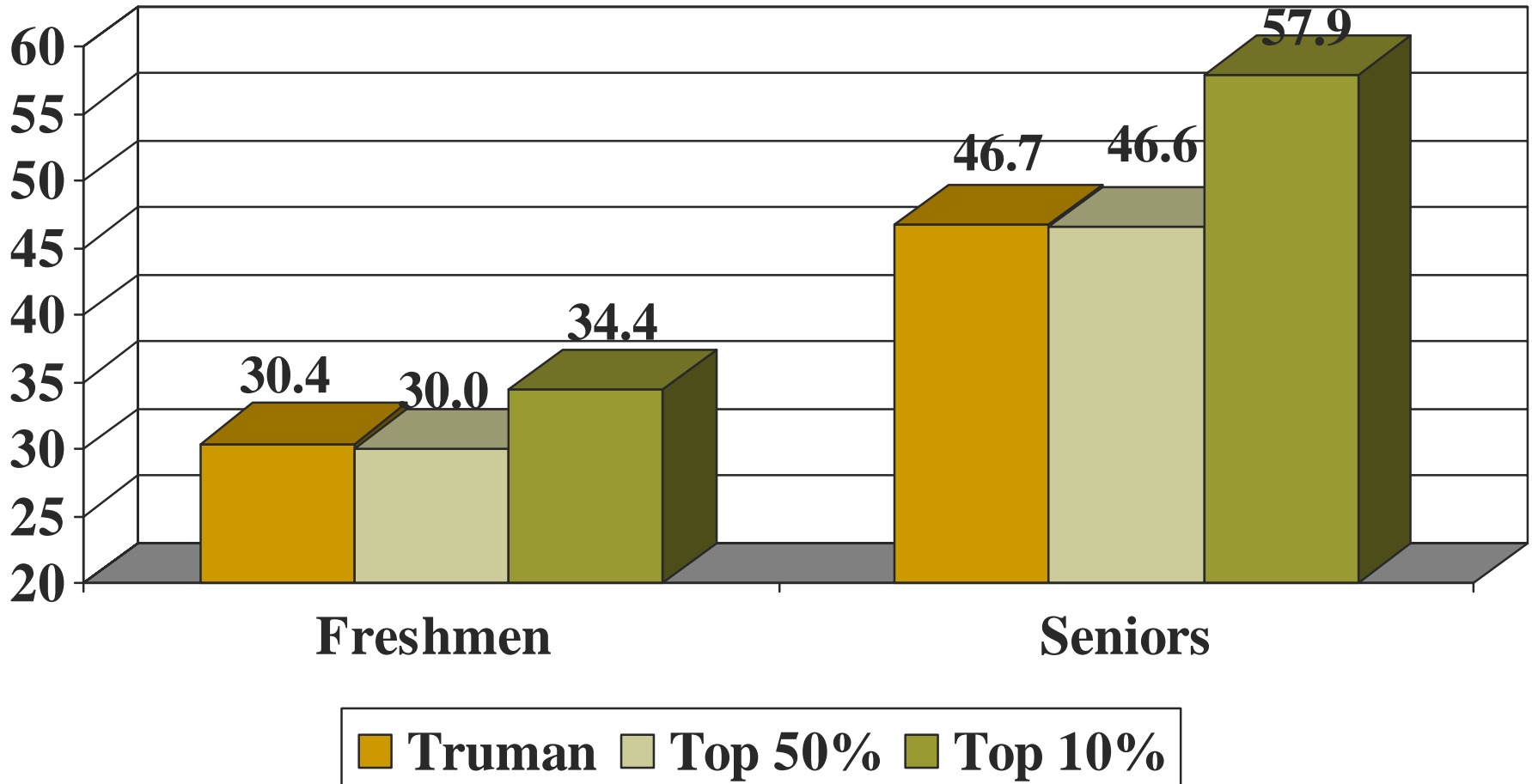
# NSSE 2006 Benchmarks

## Student-Faculty Interaction



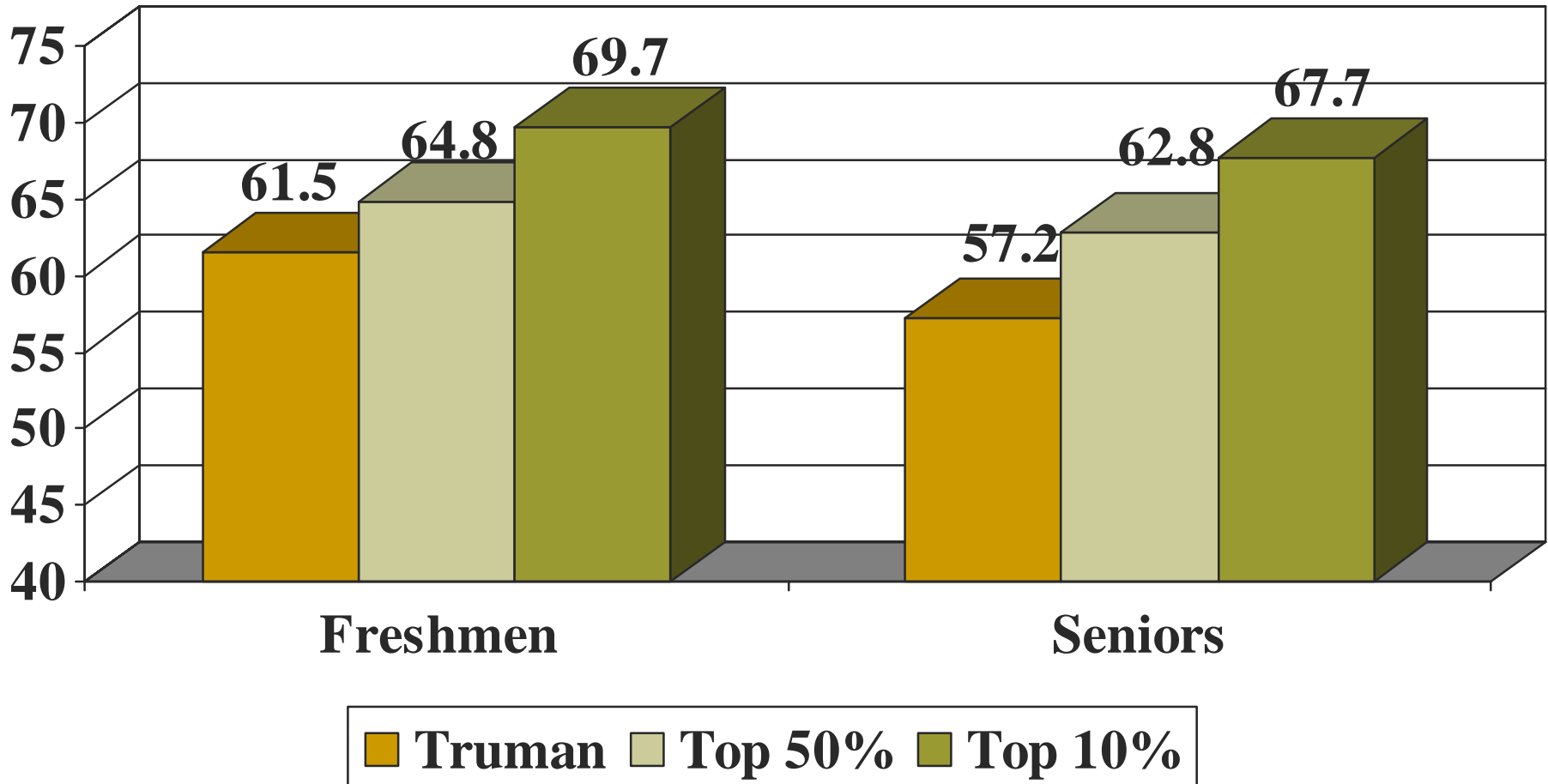
# NSSE 2006 Benchmarks

## Enriching Educational Experiences



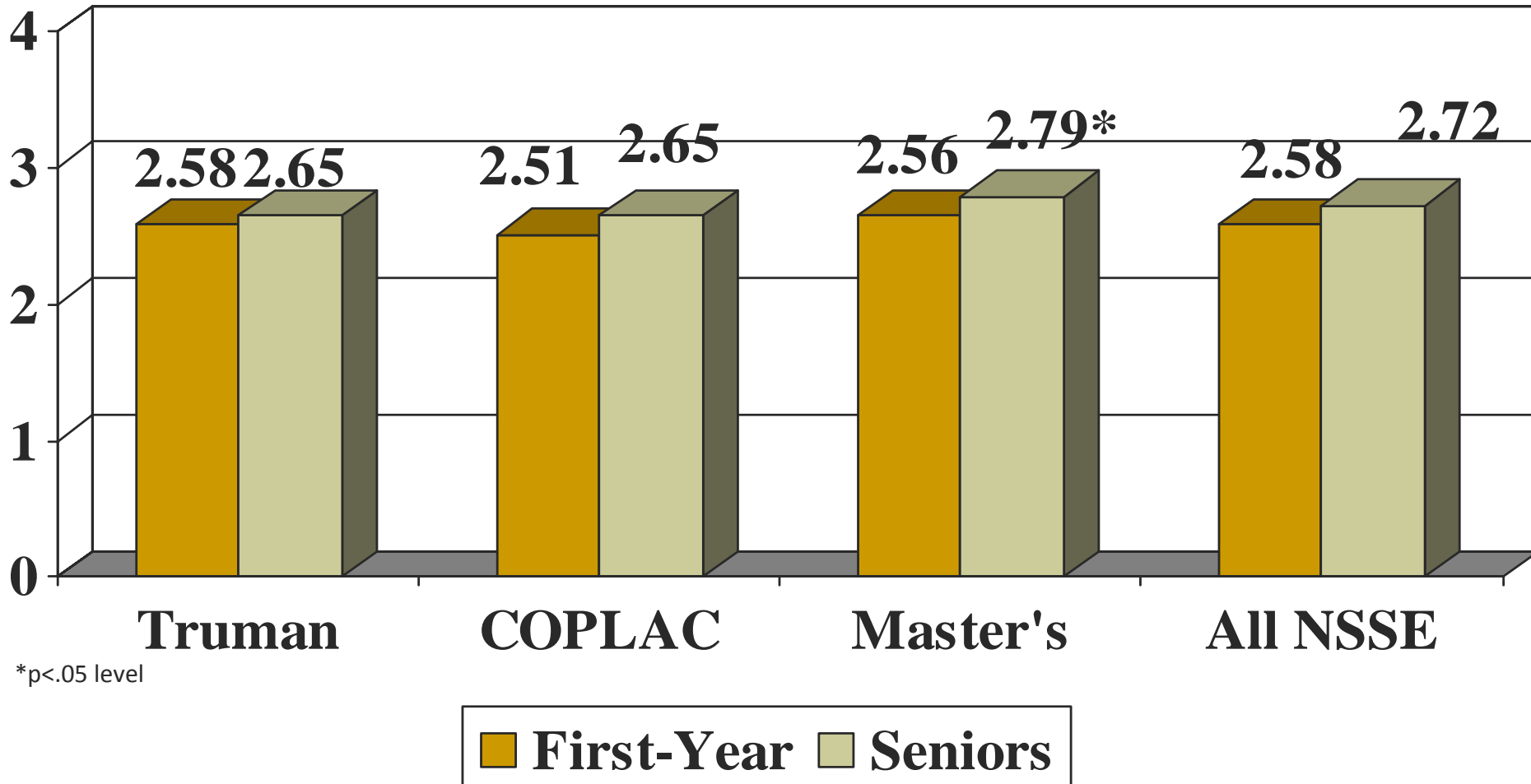
# NSSE 2006 Benchmarks

## Supportive Campus Environment



# NSSE 2006

To what extent has your experience at this institution contributed to your ability to solve complex real-world problems?





# [ Parting Question... ]

“What one thing can we do to enhance student engagement and increase student success?”

# [ One Answer... ]

“Make it possible for every student to participate in at least two *high impact activities* during their undergraduate program...”

George Kuh (2007)