

Chapter XIII: SENIOR TESTS IN THE MAJOR

Who takes it?

All seniors.

When is it administered?

During the senior year.

How long does it take for a student to complete the senior test?

This depends on the test, but the average is about 2½ hours.

What office administers it?

Assessment and Testing Office, Violette Hall 1130.

Who originates the test?

The faculty designate the test that best suits their majors.

SENIOR TESTS AT TRUMAN AS OF SPRING 2005

MFT (Major Field Test)

in Accounting
 Biology
 Business Administration
 Chemistry
 Computer Science
 Economics
 History
 Mathematics
 Music
 Physics
 Political Science
 Psychology
 Sociology/Anthropology

Mosby AssessTest

in Nursing

CHES (Certified Health Education Specialist) Exam

in Health Science

MLA Cooperative Foreign Language Proficiency Tests

in Spanish

Praxis II Exam: Content Knowledge

in Art (including Art History)
 French
 German

GRE (Graduate Record Examinations) General Test

in Classics
Communication
Communication Disorders
English
Exercise Science
Linguistics
Philosophy and Religion
Russian
Theatre

LSAT (Law School Admission Test), which may be substituted for the GRE

in Communication
English

GMAT (Graduate Management Admission Test), which may be substituted for the GRE

in Communication

ACAT (The Area Concentration Achievement Tests)

in Agricultural Science
Justice Systems

When are the results typically available?

Availability of individual results vary by exam from 2 weeks to 2 months after the exam administration. University averages are typically available in the fall for the previous fiscal year.

What type of information is sought?

Information relating to general knowledge in the major. In some cases, the tests provide subscores for particular areas of the major. The GRE General Test provides information on analytical writing, quantitative, and verbal skills.

From whom are the results available?

Assessment and Testing Office and Division Offices.

To whom are the results regularly distributed?

Individual results are communicated to students and their division. University, division, and discipline averages are sent to the President, VPAA, Division Heads, Assessment Committee, and selected administrators. University-wide results are also available through this Almanac.

Are the results available by division or discipline?

Yes.

Are the results comparable to data of other universities?

Usually, though not always (this may depend on the test involved).

All Truman seniors are required to take exams in their majors. Faculty in the majors select the most appropriate exam for their students. Currently a number of tests are used: Major Field Test, Mosby AssessTest, Certified Health Education Specialist Exam, MLA Cooperative Foreign Language Proficiency Test, Praxis II Exam (Content Knowledge), Law School Admission Test, Area Concentration Achievement Test, and Graduate Record Examination General Test. These tests are administered by the Assessment and Testing Office. The method of their administration depends on the test administered.

Results of the senior exam are used by faculty to assess student performance in the major. Additionally, University-wide student performance on the senior tests is used as an indicator that the University is meeting its institutional goal of “recruiting, supporting, and graduating a well-prepared, highly qualified student body” as stated in the Truman State University Master Plan Update (p. 20). Results are also reported to the Coordinating Board for Higher Education (CBHE) as required by the state of Missouri.

Generally, senior test results are reported as percentiles. At the individual student level, percentiles indicate what percent of all students nation-wide taking the test have test scores at or below that of the particular student. Typically, we are interested in the number of students University-wide and by division and major who scored above the 50th and above the 80th percentile.

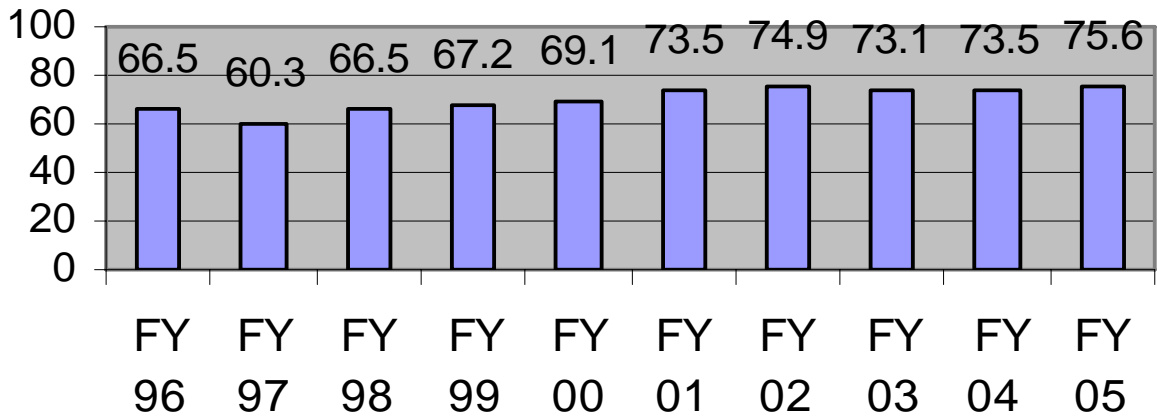
Between 1998 and 2002, Truman included in its Master Plan yearly projections for University-wide, division-level, and major-level student performance above the 50th percentile on the senior tests; the updated version of the Master Plan document includes a 2007 projection for University-wide and division-level student performance above the 50th percentile. Additionally, the CBHE requires a report on the average and range of percent of majors scoring above the 50th and the 80th percentile on the senior tests.

In fiscal year 2005, 1,111 students took senior tests in the major. Traditionally, results of the senior tests by major and division are not reported University-wide. It can be reported, however, that the percent of students scoring above the 50th percentile on the senior tests increased from 2004 to 2005 for four of the divisions, up slightly from 2004 when three of the divisions reported increases compared to 2003. One division actually exceeded its projection for 2007.

In contrast, results showed the percent of students scoring above the 80th percentile on the senior tests was down slightly from 2004. Two of the seven divisions reported increases from 2004 to 2005 in the percent of students who scored above the 80th percentile, compared to four divisions reporting increases 2004 compared to 2003.

University-wide, the percentage of students scoring above the 50th percentile increased from 73.52% in 2004 to 75.61% in 2005, a University all-time high. The percent of students University-wide scoring above the 80th percentile was 37.89, a slight decrease from the 2004 University all-time high of 41.04. Overall, the percent of Truman students scoring above the 50th percentile on the senior tests has been slowly increasing toward the 2007 Master Plan goal of 80%, while the percent of students scoring above the 80th percentile has been slowly increasing toward a desirable goal of 50%. These results are shown in the tables below.

Percent Scoring Above the 50th Percentile on the Senior Tests



Percent Scoring Above the 80th Percentile on Senior Tests

