

Chapter VIII: JUNIOR TESTING

Who takes it?

Juniors. Half of the students take three modules of the CAAP test and the remaining half take the Academic Profile.

When is it administered?

Either in the fall or spring semester at specially arranged times by the Assessment and Testing Office.

How long does it take for the student to complete the test?

2 ½ hours.

What office administers it?

The Assessment and Testing Office, Violette Hall 1130.

Who originates the tests?

The CAAP comes from ACT and the Academic Profile from ETS.

When are the results typically available?

For the individual student and the student's advisor, results are available near the end of the semester the test is taken. University reports for the fiscal year are typically available in late June.

What type of information is sought?

Information about the skills used in the liberal arts based general education curriculum.

The CAAP provides measurement in five areas: writing, mathematics, reading, critical thinking, and science. The Academic Profile tests students in all of these areas: natural science, social science, mathematics, humanities, reading, writing, and critical thinking.

CAAP: American College Testing Program

500 ACT Drive, PO Box 168

Iowa City, IA 52243-0168

(319) 337-1053

<http://www.act.org/caap/index.html>

e-mail: outcomes@act.org

Academic Profile: Educational

Testing Services

Rosedale Road

Princeton, NJ 08541

(800) 745-0269

<http://www.ets.org/hea/acpro/index.html>

e-mail: hea@ets.org

From whom are the results available?

Assessment and Testing Office.

Are the results available by division or discipline?

Yes.

To whom are the results regularly distributed?

Individual results are communicated to students and their advisors. University, division, and

discipline averages are sent to the President, VPAA, Division Heads, Assessment Committee, and selected administrators. University-wide results are also available through this *Almanac*.

Are the results comparable to data of other universities?

Both the CAAP and Academic Profile provide comparative data norms. The CAAP has nationally normed scores for each test module, while the Academic Profile provides norms for only the total score.

Freshman - Sophomore/Junior Testing
Pre-test/Post-test Results, FY95-FY04
CAAP Tests: Pre-test/Post-test Scale Scores and Percentiles

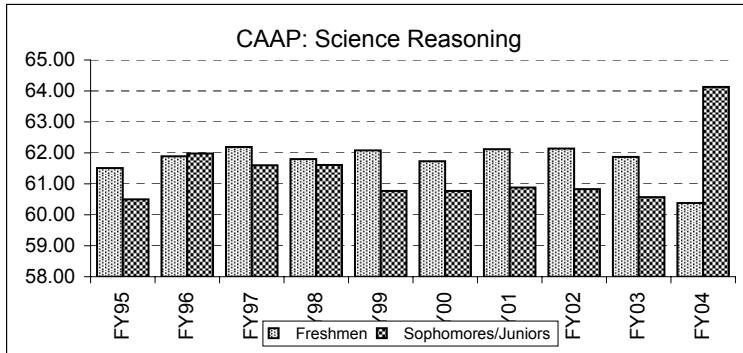
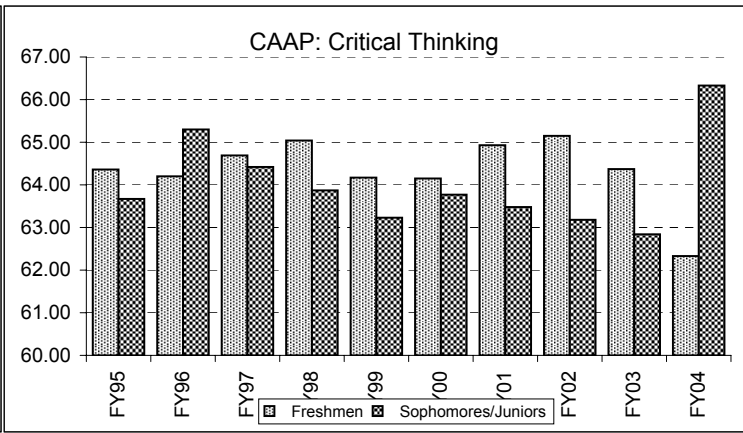
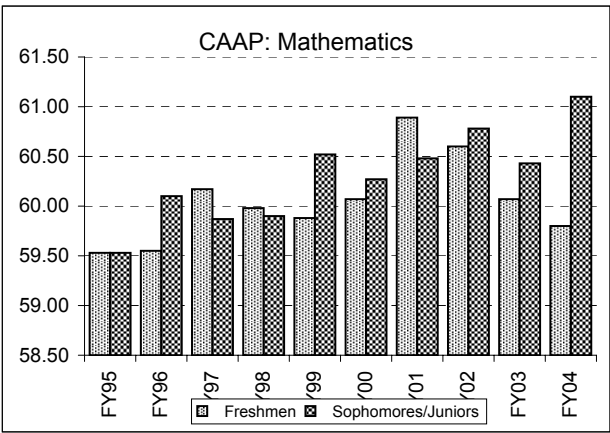
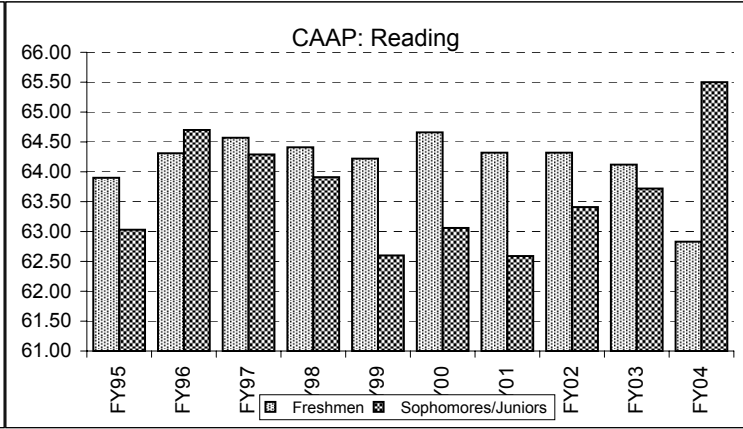
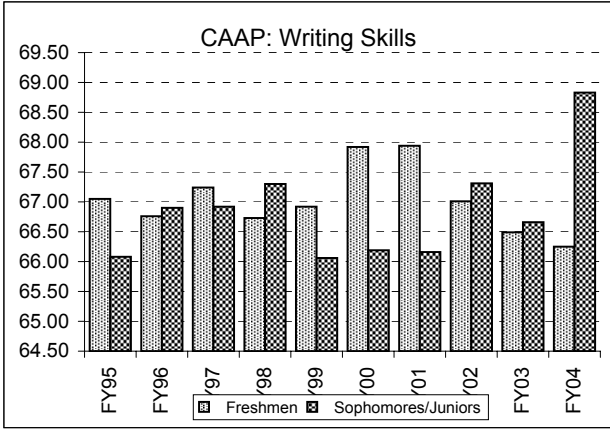
	1994-95 FY95	1995-96 FY96	1996-97 FY97	1997-98 FY98	1998-99 FY99	1999-00 FY00	2000-01 FY01	2001-02 FY02	2002-03 FY03	2003-04 FY04
WRITING SKILLS	N=155	N=533	N=498	N=460	N=415	N=469	N=401	N=334	N=212	N=12
Freshmen	67.05	66.76	67.24	66.73	66.92	67.92	67.94	67.01	66.49	66.25
Sophomores/Juniors	66.08	66.90	66.92	67.30	66.06	66.19	66.16	67.31	66.66	68.83
Change +/-	-0.96	0.13	-0.31	0.56	-0.86	-1.72	-1.78	0.29	0.16	2.58
%positive/%negative/%unchanged	45.2/42.6/12.2	49.9/32.6/17.4	47.4/37.3/15.3	60.9/26.1/13.0	42.9/41.4/15.7	31.6/51.0/17.5	45.4/39.7/15.0	55.4/24.0/20.7	56.1/33.5/10.4	75.0/8.3/16.7
Pre-Test %ile ****	76.3	74.1	72.9	61.5	62.0	73.4	75.6	74.1	74.9	77.0
Post-Test%ile *****	70.6	72.0	70.2	73.1	62.5	63.5	62.4	71.5	64.9	82.8
READING	N=563	N=593	N=477	N=436	N=418	N=461	N=390	N=338	N=203	N=12
Freshmen	63.90	64.31	64.57	64.41	64.22	64.66	64.32	64.32	64.12	62.83
Sophomores/Juniors	63.03	64.70	64.29	63.91	62.60	63.06	62.59	63.41	63.72	65.50
Change +/-	-0.87	0.38	-0.27	-0.50	-1.61	-1.60	-1.73	-0.90	-0.40	2.67
%positive/%negative/%unchanged	45.5/46.0/8.5	53.6/35.9/10.5	48.4/43.2/8.4	48.6/43.6/7.8	41.1/52.2/6.7	43.0/46.9/10.2	41.5/47.9/10.5	46.4/45.0/8.6	45.8/39.9/14.3	58.3/41.7/0
Pre-Test %ile ****	64.9	68.2	67.4	64.5	57.8	63.3	63.2	66.9	67.7	61.5
Post-Test%ile *****	58.2	65.6	62.0	59.3	48.8	51.5	48.1	54.3	57.0	69.5
MATHEMATICS	N=552	N=560	N=482	N=475	N=455	N=494	N=394	N=329	N=212	N=10
Freshmen	59.53	59.55	60.17	59.98	59.88	60.07	60.89	60.60	60.07	59.80
Sophomores/Juniors	59.53	60.10	59.87	59.90	60.52	60.27	60.48	60.78	60.43	61.10
Change +/-	0.00	0.54	-0.29	-0.08	0.64	0.20	-0.40	0.18	0.36	1.30
%positive/%negative/%unchanged	45.8/43.1/11.1	52.9/36.8/10.4	43.4/42.5/14.1	42.7/44.2/13.1	54.5/35.4/10.1	53.0/35.4/11.5	48.0/40.9/11.2	48.6/38.9/12.5	49.5/37.7/12.7	60.0/10.0/30.0
Pre-Test %ile ****	66.2	68.4	73.2	71.8	66.9	68.6	76.9	76.0	74.7	73.6
Post-Test%ile *****	73.2	76.6	76.0	76.3	80.6	77.2	76.3	77.0	76.9	83.4
CRITICAL THINKING	N=574	N=544	N=494	N=462	N=474	N=490	N=394	N=350	N=201	N=6
Freshmen	64.36	64.20	64.69	65.04	64.17	64.15	64.93	65.15	64.37	62.33
Sophomores/Juniors	63.67	65.30	64.42	63.87	63.23	63.77	63.48	63.18	62.84	66.33
Change +/-	-0.68	1.10	-0.26	-1.19	-0.94	-0.37	-1.44	-1.97	-1.53	4.00
%positive/%negative/%unchanged	49.5/42.3/8.2	59.0/29.4/11.6	53.4/37.0/9.5	43.3/48.7/8.0	50.6/41.4/8.0	50.4/39.8/9.8	47.7/43.9/8.4	41.7/50.3/8.0	42.3/48.3/9.5	83.3/16.7/0
Pre-Test %ile ****	66.5	66.2	67.1	67.3	58.0	59.1	70.6	74.8	73.9	57.3
Post-Test%ile *****	58.4	63.5	59.1	57.7	55.1	62.4	58.8	54.6	52.0	75.0
SCIENCE REASONING***	N=580	N=522	N=465	N=460	N=413	N=479	N=422	N=357	N=227	N=8
Freshmen	61.51	61.89	62.19	61.80	62.08	61.73	62.12	62.14	61.87	60.38
Sophomores/Juniors	60.50	61.98	61.60	61.61	60.77	60.77	60.88	60.83	60.57	64.13
Change +/-	-1.01	0.08	-0.59	-0.18	-1.31	-0.95	-1.24	-1.30	-1.29	3.75
%positive/%negative/%unchanged	41.4/47.8/10.9	50.4/40.2/9.4	48.8/41.5/9.7	49.3/38.9/11.7	38.5/52.3/9.2	44.7/46.8/8.6	44.3/48.8/6.9	45.4/48.5/6.2	43.2/52.0/4.8	87.5/12.5/0
Pre-Test %ile ****	41.06	68.45	66.71	61.40	64.7	63.6	65.1	63.3	68.1	62.7
Post-Test%ile *****	51.50	63.88	62.60	62.27	54.9	52.4	52.0	50.6	48.0	75.9

Note: In each column, data reflect scores of students who, during that year, completed the "Sophomore"/"Junior" retest. The "Freshman" score in that column is the matched pretest mean, reflecting scores earned by these same students whenever they first entered. The table is therefore a longitudinal summary by cohort, not a comparison of the Freshman vs. Sophomore/Junior scores within a given year.

**** Percentiles are estimated for the pre-test (freshman) using the closest fall user norms, i.e. a student who took the post-test in fall of 2002 more than likely took their pre-test in the fall of 2000, thus 2000 user norms were used.

***** Percentiles are estimated for the post-test (sophomore/junior test) using the closest fall user norms, i.e. for a student who took the post test in fall of 2002 or spring of 2003, the fall 2002 user norms were used.

Beginning in Fall 2000, freshmen testing was suspended resulting in a smaller N of comparable scores.



** Beginning in Fall 1993 (FY94), Sophomore/Junior testing follows the completion of 60 CH of coursework (vs. 45 CH in previous years).

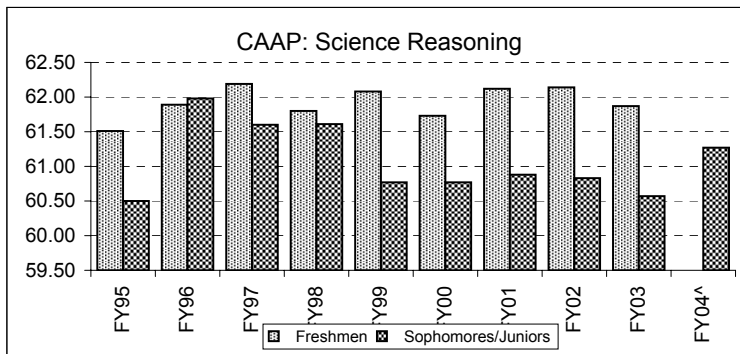
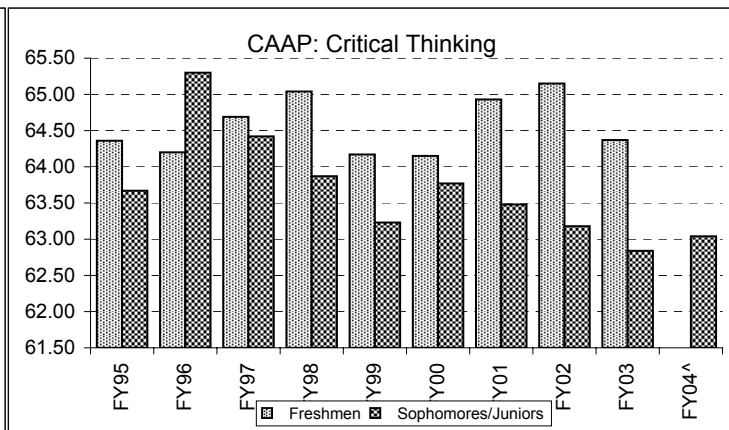
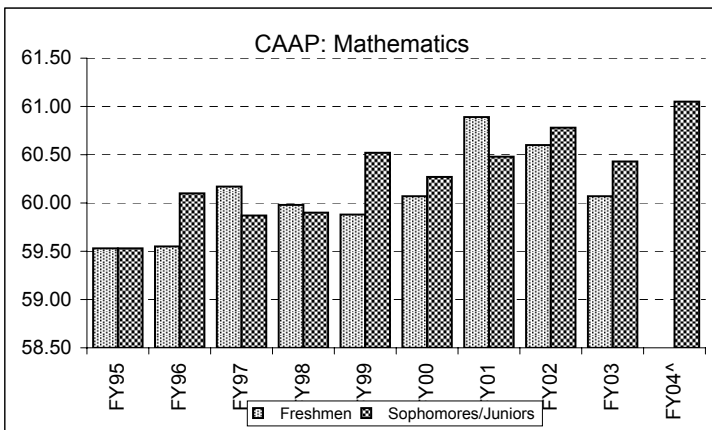
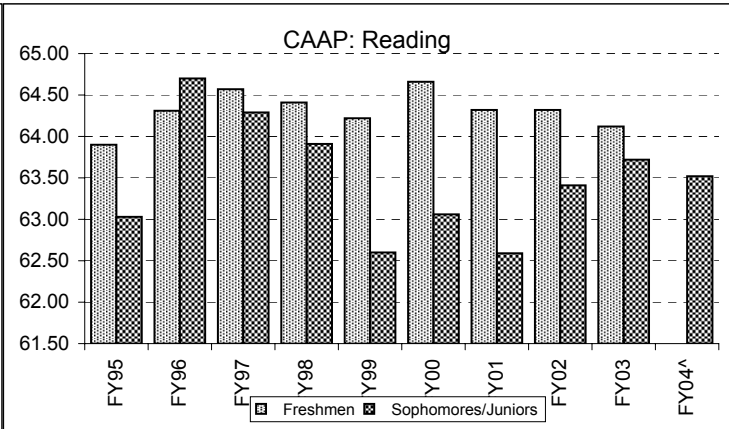
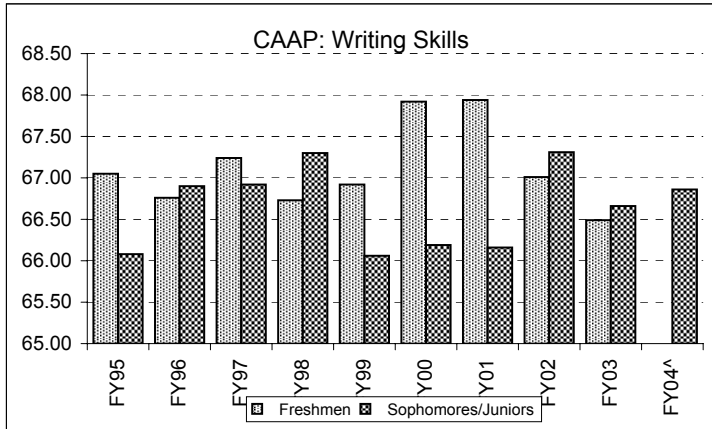
Sophomore/Junior Testing
FY95-FY04
CAAP Scale Scores and Percentiles

	1994-95 FY95	1995-96 FY96	1996-97 FY97	1997-98 FY98	1998-99 FY99	1999-00 FY00	2000-01 FY01	2001-02 FY02	2002-03 FY03	2003-04 FY04 [^]
WRITING SKILLS	N=155	N=533	N=498	N=460	N=415	N=469	N=401	N=334	N=212	N=392
Sophomores/Juniors	66.08	66.90	66.92	67.30	66.06	66.19	66.16	67.31	66.66	66.86
Post-Test%ile *****	70.6	72.0	70.2	73.1	62.5	63.5	62.4	71.5	64.9	74.0
# >= 50 percentile										210
# >= 80 percentile										99
READING	N=563	N=593	N=477	N=436	N=418	N=461	N=390	N=338	N=203	N=368
Sophomores/Juniors	63.03	64.70	64.29	63.91	62.60	63.06	62.59	63.41	63.72	63.52
Post-Test%ile *****	58.2	65.6	62.0	59.3	48.8	51.5	48.1	54.3	57.0	64.2
# >= 50 percentile										204
# >= 80 percentile										83
MATHEMATICS	N=552	N=560	N=482	N=475	N=455	N=494	N=394	N=329	N=212	N=365
Sophomores/Juniors	59.53	60.10	59.87	59.90	60.52	60.27	60.48	60.78	60.43	61.05
Post-Test%ile *****	73.2	76.6	76.0	76.3	80.6	77.2	76.3	77.0	76.9	88.2
# >= 50 percentile										215
# >= 80 percentile										107
CRITICAL THINKING	N=574	N=544	N=494	N=462	N=474	N=490	N=394	N=350	N=201	N=386
Sophomores/Juniors	63.67	65.30	64.42	63.87	63.23	63.77	63.48	63.18	62.84	63.04
Post-Test%ile *****	58.4	63.5	59.1	57.7	55.1	62.4	58.8	54.6	52.0	62.3
# >= 50 percentile										202
# >= 80 percentile										88
SCIENCE REASONING***	N=580	N=522	N=465	N=460	N=413	N=479	N=422	N=357	N=227	N=398
Sophomores/Juniors	60.50	61.98	61.60	61.61	60.77	60.77	60.88	60.83	60.57	61.27
Post-Test%ile *****	51.50	63.88	62.60	62.27	54.9	52.4	52.0	50.6	48.0	61.4
# >= 50 percentile										236
# >= 80 percentile										98

Note: In each column, data reflect scores of students who, during that year, completed the "Sophomore"/"Junior" retest. The "Freshman" score in that column is the matched pretest mean, reflecting scores earned by these same students whenever they first entered. The table is therefore a longitudinal summary by cohort, not a comparison of the Freshman vs. Sophomore/Junior scores within a given year.
 took their pre-test in the fall of 2000, thus 2000 user norms were used.

***** Percentiles are estimated for the post-test (sophomore/junior test) using the closest fall user norms, i.e. for a student who took the post test in fall of 2002 or spring of 2003, the fall 2002 user norms were used.

[^] In FY04, the N is comprised of the score results of the students who graduated within the fiscal year. All other scores are based on the fiscal year the juniors took their tests.

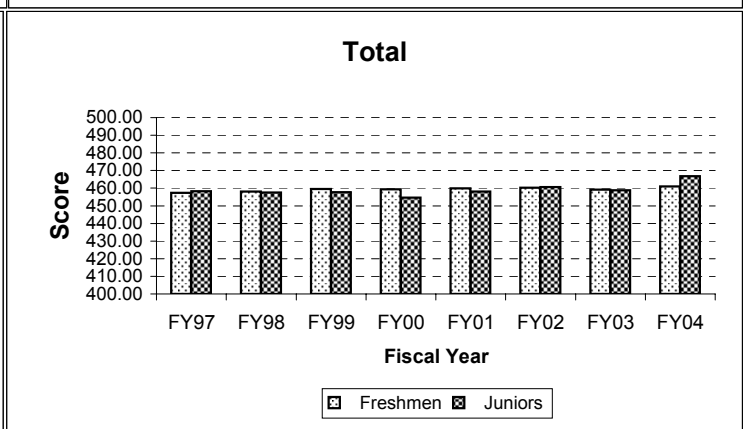
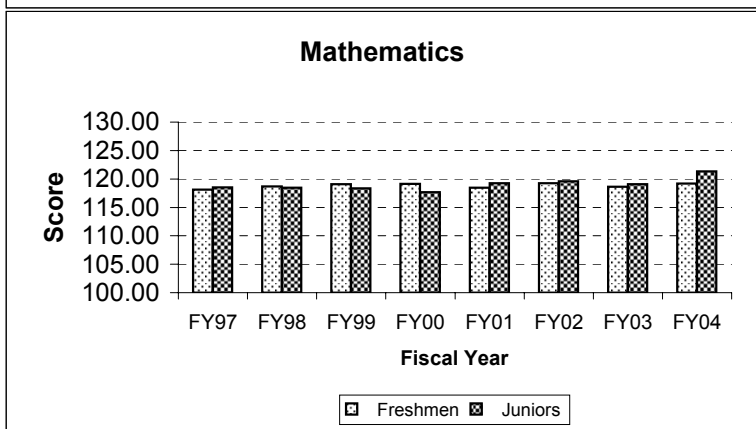
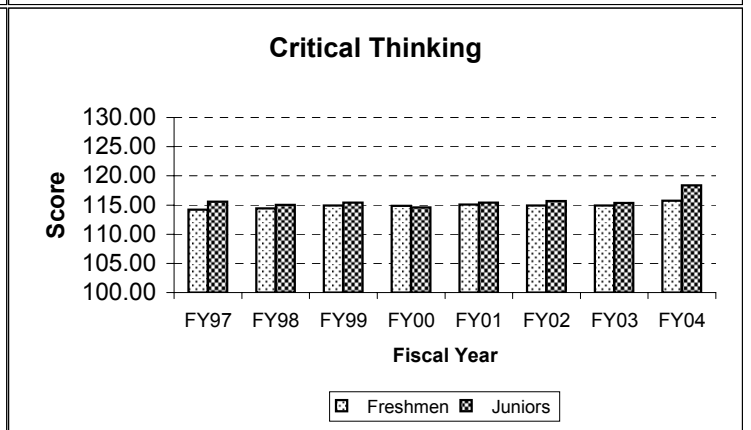
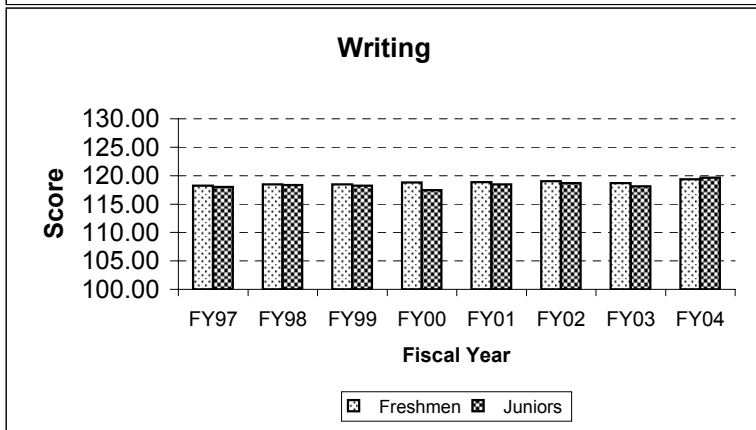
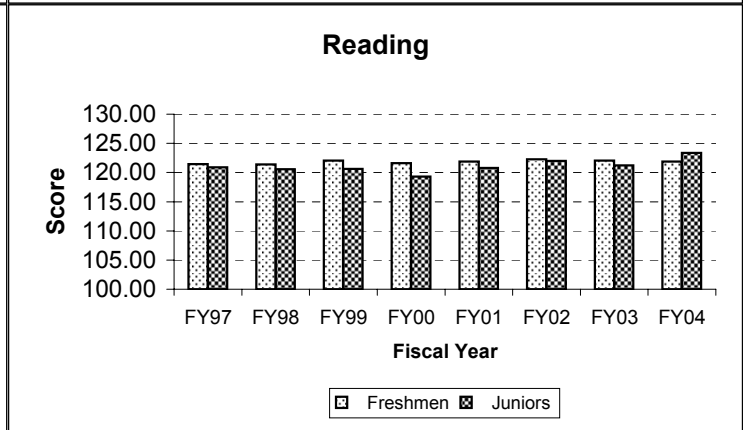
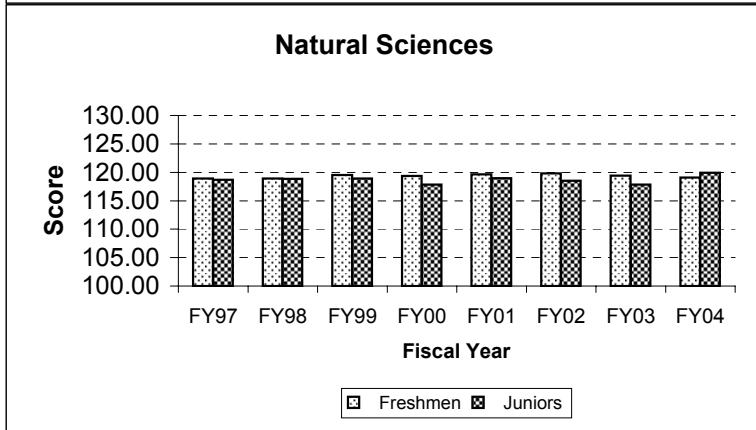
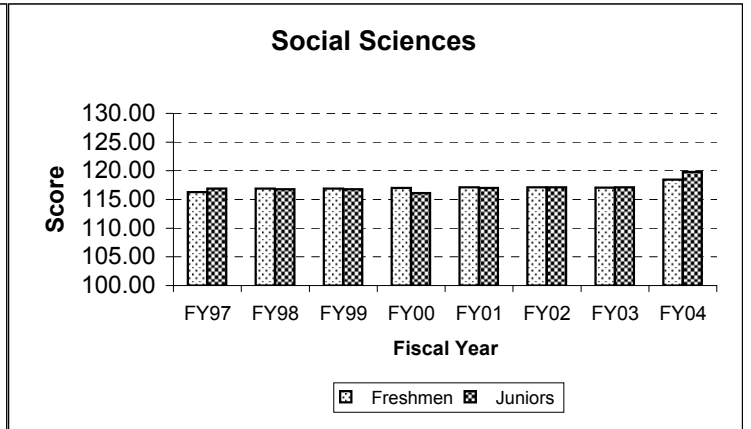
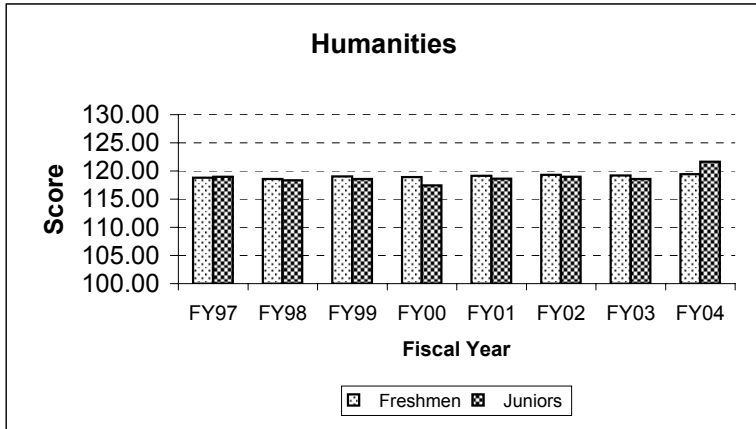


** Beginning in Fall 1993 (FY94), Sophomore/Junior testing follows the completion of 60 CH of coursework (vs. 45 CH in previous years).

Freshman - Junior Testing
Pre-Test/Post-Test Results, FY97-FY04
Academic Profile

	1996-97 FY97	1997-98 FY98	1998-99 FY99	1999-00 FY00	2000-01 FY01	2001-02 FY02	2002-03 FY03	2003-04 FY04
Humanities	N=182	N=539	N=558	N=597	N=558	N=434	N=270	N=11
Freshmen	118.78	118.57	119.02	118.94	119.14	119.30	119.20	119.45
Juniors	118.96	118.37	118.56	117.45	118.61	119.00	118.57	121.64
Change +/-	0.18	-0.20	-0.45	-1.49	-0.53	-0.30	-0.63	2.18
%positive/%negative/%unchanged	50.0/42.3/7.7	50.3/39.0/10.8	48.9/45.2/59.1	44.9/44.9/10.2	50.4/42.7/7.0	43.8/48.8/7.4	44.8/46.3/8.9	54.5/45.5/0
Social Science	N=182	N=539	N=558	N=597	N=558	N=434	N=270	N=11
Freshmen	116.31	116.87	116.92	117.03	117.11	117.14	117.08	118.48
Juniors	116.87	116.77	116.81	116.10	117.03	117.14	117.12	119.82
Change +/-	0.55	-0.09	-0.10	-0.92	-0.08	0.00	0.04	1.36
%positive/%negative/%unchanged	53.8/38.5/7.7	50.1/41.6/8.3	52.2/40.9/7.0	48.6/44.6/6.9	52.2/38.7/9.1	47.9/41.7/10.4	51.5/43.3/5.2	45.5/36.4/18.2
Natural Science	N=182	N=539	N=558	N=597	N=558	N=434	N=270	N=11
Freshmen	118.89	118.89	119.53	119.34	119.63	119.80	119.43	119.09
Juniors	118.71	118.87	118.90	117.86	118.99	118.54	117.85	119.91
Change +/-	-0.18	-0.02	-0.62	-1.47	-0.63	-1.25	-1.57	0.82
%positive/%negative/%unchanged	51.1/37.9/11.0	52.3/39.3/8.3	50.9/41.2/7.9	46.4/45.6/8.0	48.4/41.2/12.9	38.2/54.6/7.1	38.5/54.1/7.4	45.5/36.4/18.2
Reading	N=182	N=539	N=558	N=597	N=558	N=434	N=270	N=11
Freshmen	121.45	121.40	122.07	121.62	121.9	122.29	122.05	121.91
Juniors	120.91	120.54	120.62	119.30	120.76	121.99	121.24	123.36
Change +/-	-0.53	-0.85	-1.45	-2.31	-1.14	-0.029	-0.81	1.45
%positive/%negative/%unchanged	48.4/44.0/7.7	48.1/41.9/10.0	45.5/44.1/10.4	42.4/46.9/10.7	45.0/42.1/12.9	41.5/46.5/12.0	44.1/42.6/13.3	63.6/36.4/0
Writing	N=182	N=539	N=558	N=597	N=558	N=434	N=270	N=11
Freshmen	118.26	118.48	118.46	118.78	118.87	119.02	118.67	119.36
Juniors	118.03	118.37	118.23	117.46	118.44	118.67	118.1	119.64
Change +/-	-0.23	-0.11	-0.22	-1.31	-0.43	-0.34	-0.57	0.27
%positive/%negative/%unchanged	50.5/42.9/6.6	52.1/39.0/8.9	50.5/38.9/10.6	45.4/45.9/8.7	47.0/43.2/9.9	41.9/47.5/10.6	40.7/48.9/10.4	54.5/18.2/27.3
Critical Thinking	N=182	N=539	N=558	N=597	N=558	N=434	N=270	N=11
Freshmen	114.23	114.43	114.91	114.89	115.07	114.91	114.94	115.73
Juniors	115.56	115.05	115.39	114.61	115.39	115.66	115.33	118.36
Change +/-	1.33	0.61	0.48	-0.27	0.32	0.74	0.38	2.64
%positive/%negative/%unchanged	56.6/32.4/11.0	56.0/36.9/7.1	55.0/38.4/6.6	50.4/42.5/7.0	54.7/36.2/9.1	54.1/39.2/6.7	49.6/41.5/8.9	72.7/18.2/9.1
Mathematics	N=182	N=539	N=558	N=597	N=558	N=434	N=270	N=11
Freshmen	118.15	118.70	119.10	119.14	118.47	119.23	118.62	119.18
Juniors	118.49	118.44	118.37	117.68	119.24	119.58	119.07	121.36
Change +/-	0.33	-0.26	-0.72	-1.45	-0.77	0.35	0.41	2.18
%positive/%negative/%unchanged	55.5/36.8/7.7	47.9/40.8/11.3	48.7/40.7/10.6	45.1/45.7/9.2	48.2/42.3/9.5	51.8/38.9/9.2	50.4/40.7/8.9	54.5/36.4/9.1
Total	N=182	N=539	N=558	N=597	N=558	N=434	N=270	N=11
Freshmen	457.28	458.10	459.47	459.36	459.98	460.26	459.24	461.00
Juniors	458.17	457.58	457.76	454.60	458.16	460.54	458.77	466.73
Change +/-	0.89	-0.51	-1.71	-4.76	-1.81	0.27	-0.47	5.73
%positive/%negative/%unchanged	61.5/36.3/2.2	58.3/38.4/3.3	55.2/41.6/3.2	53.9/43.9/2.2	56.5/40.1/3.4	53.7/41.9/4.4	53.3/41.1/5.6	81.8/18.2/0
Freshman percentile	75.0	75.1	77.4	77.1	79.0	79.3	76.7	78.0
Junior percentile	75.3	75.0	75.0	70.6	78.2	80.5	78.8	85.0

Note: Beginning in Fall 1994, the Academic Profile replaced the COMP as a junior test.



**Junior Testing
FY97-FY04
Academic Profile**

	1996-97 FY97	1997-98 FY98	1998-99 FY99	1999-00 FY00	2000-01 FY01	2001-02 FY02	2002-03 FY03	2003-04 FY04
Humanities	N=182	N=539	N=558	N=597	N=558	N=434	N=270	N=441
Juniors	118.96	118.37	118.56	117.45	118.61	119.00	118.57	118.72
Junior percentile								70.04
Social Science	N=182	N=539	N=558	N=597	N=558	N=434	N=270	N=441
Juniors	116.87	116.77	116.81	116.10	117.03	117.14	117.12	117.15
Junior percentile								72.60
Natural Science	N=182	N=539	N=558	N=597	N=558	N=434	N=270	N=441
Juniors	118.71	118.87	118.90	117.86	118.99	118.54	117.85	118.35
Junior percentile								62.15
Reading	N=182	N=539	N=558	N=597	N=558	N=434	N=270	N=441
Juniors	120.91	120.54	120.62	119.30	120.76	121.99	121.24	121.48
Junior percentile								60.40
Writing	N=182	N=539	N=558	N=597	N=558	N=434	N=270	N=441
Juniors	118.03	118.37	118.23	117.46	118.44	118.67	118.1	118.30
Junior percentile								70.50
Critical Thinking	N=182	N=539	N=558	N=597	N=558	N=434	N=270	N=441
Juniors	115.56	115.05	115.39	114.61	115.39	115.66	115.33	115.66
Junior percentile								72.96
Mathematics	N=182	N=539	N=558	N=597	N=558	N=434	N=270	N=441
Juniors	118.49	118.44	118.37	117.68	119.24	119.58	119.07	119.37
Junior percentile								82.48
Total	N=182	N=539	N=558	N=597	N=558	N=434	N=270	N=441
Juniors	458.17	457.58	457.76	454.60	458.16	460.54	458.77	459.62
Junior percentile	75.3	75.0	75.0	70.6	78.2	80.5	78.8	77.24
# of scores >= 50th percentile								342
# of scores >= 80th percentile								223

