

Chapter X: INSTITUTIONAL STUDENT SURVEY AND GRADUATING STUDENT QUESTIONNAIRE

Institutional Student Survey

Who takes it?

Sophomores and juniors (45-75 credit hours). Taking and returning the survey is not mandatory (though this may change during the new Liberal Studies Program).

When is it administered?

Spring of each year.

How long does it take the student to complete the instrument?

20 minutes.

What office administers it?

Assessment and Testing.

Who originates the survey?

The questions typically are determined by the Vice President for Academic Affairs and the Assessment Committee.

When are results typically available?

The summer following the end of that fiscal year.

What type of information is sought?

The ISS asks about the highest academic degree sought, selection of Truman, future plans for employment and graduate school, knowledge and opinions on assessment, time spent outside of class on course-related work, writing required, and the challenge of courses. Students are also asked how often they dealt with other students in various academic and co-curricular contexts, used the library, attended cultural or co-curricular events, used writing centers and other labs or tutorial services, and applied knowledge and skills from one area in another. Students are asked how many faculty members they know well enough to get a letter of recommendation. Students are then asked how effective their education has been in regard to an extensive list of academic and social skills. The students rate various aspects of their major. Students respond as to how satisfied they are with the faculty and other aspects of the campus including a variety of services, offices, and facilities. Students are asked about Freshman Week, discrimination, and the amount of time spent in various activities in an average week. Any additional student comments may be added.

From whom are the results available?

Assessing and Testing.

Distribution is normally made to?

President, VPAA, Division Heads, Assessment Committee, and selected administration.

Are the results available by division or discipline?

Yes.

Are the results comparable to data of other universities?

No.

Graduating Student Questionnaire

Who takes it?

All graduating seniors.

When is it administered?

A short time before graduation.

How long does it take for the student to complete the instrument?

20 minutes.

What office administers it?

It is sent out in a graduation packet by the Registrar's Office.

Who originates the survey?

The Vice President for Academic Affairs and the University Assessment Committee.

When are the results typically available?

For the fiscal year, in late June or July.

What type of information is sought?

The GSQ questions are virtually identical with those of the ISS. The GSQ asks about the highest academic degree sought, selection of Truman, future plans for employment and graduate school, knowledge and opinions on assessment, time spent outside of class on course-related work, writing required, and the challenge of courses. Students are also asked how often they dealt with other students in academic and co-curricular contexts, used the library, attended cultural or co-curricular events, used writing centers and other labs or tutorial services, and applied knowledge and skills from one area in another. Students are asked how many faculty members they know well enough to get a letter of recommendation. Students are asked how effective their education has been in regard to an extensive list of academic and social skills. The students rate various aspects of their major. Students respond as to how satisfied they are with the faculty and other aspects of campus including a variety of services, offices, and facilities. Students are asked about Freshman Week, discrimination, and the amount of time spent in various activities in an average week. Any additional student comments may be added.

From whom are the results available?

Assessment and Testing Office.

Distribution regularly made available to whom?

University, division, and discipline averages are sent to the President, VPAA, Division Heads,

Assessment Committee, and selected administrators.

Are the results available by division or discipline?

Yes.

Are the results comparable to data of other universities?

No.

Note: The response rate for the ISS is about 41-42%. For the GSQ it is close to 100%. Questions were changed for these surveys several years ago and so some older comparisons are not possible. The complete survey results for FY96 and FY97 are found in Volume 3.

The numbers for questions correspond to the overall report found in Volume 3.

1. Percentage of Truman students planning doctorate or professional school:

ISS-FY96	27.3%
ISS-FY97	25.8
GSQ-FY96	29.5
GSQ-FY97	29.1

2. Planning to attend graduate school, full or part time:

ISS-FY96	68.2%
ISS-FY97	64.8
GSQ-FY96	43.5
GSQ-FY 97	42.0

3. Truman was first choice:

ISS-FY96	65.2%
ISS-FY97	64.6
GSQ-FY96	64.1
GSQ-FY 97	64.7

4. Would you choose Truman again?

	Definitely Yes	Probably Yes
ISS-FY96	30.7%	52.0%
ISS-FY97	37.1	45.8
GSQ-FY96	28.5	47.9
GSQ-FY 97	29.3	48.7

5. Reasons--for attending Truman: First

Second

ISS-FY96	Cost 42%	Acad. Reputation
----------	----------	------------------

		26.8%
ISS-FY97	Cost 39.4	Cost 23.4*
GSQ-FY96	Cost 42.8	Acad. Reputation 22.4%
GSQ-FY 97	Cost 41.9	Cost* 24.2

*For ISS97 and GSQ97, academic reputation had the second highest percentage for first and second reason.

6. Assessment Program

ISS96	I know and understand it	56.0%
ISS97	I know and understand it	57.1
GSQ96	I know and understand it	73.2
GSQ97	I know and understand it	75.4

8. Class Hours Per Week Spent on Course-Related Work:

0-5 6-10 11-15 16-20 21-25 26-30 31-

ISS96	3.5	16.2	21.8	24.8	15.2	10.6	8.1
ISS97	4.8	16.2	23.1	24.0	15.2	9.3	7.3
GSQ96	6.3	18.3	22.5	23.3	13.2	9.9	6.6
GSQ97	4.8	19.2	20.4	23.7	16.1	9.6	6.2

10. Major Courses Challenging--MEAN (1=never, 4=very often)?

ISS96	3.435
ISS97	3.394
GSQ96	3.379
GSQ97	3.208

11. Core Courses Challenging--MEAN (1=never, 4=very often)?

ISS96	2.928
ISS97	2.925
GSQ96	2.739
GSQ97	2.672

Number of times your were involved in the following activities during the school year where:
1 = never, 2 = seldom, 3 = often, and 4 = very often, and n/a = not applicable

12a. Interacted with people from other cultures:

Mean

ISS FY96	2.455
----------	-------

ISS FY97	2.557
GSQ FY96	2.635
GSQ FY97	2.684

12d. Communicated with a faculty member out of class:

Mean

ISS FY96	3.005
ISS FY97	2.941
GSQ FY96	3.158
GSQ FY97	3.145

12g. Attended a cultural event (e.g. art exhibit, play, concert, campus lectures):

Mean

ISS FY96	2.731
ISS FY97	2.697
GSQ FY96	2.610
GSQ FY97	2.629

12f. Applied the knowledge and skills gained in one discipline to learning in other disciplines:

Mean

ISS FY96	3.050
ISS FY97	3.058
GSQ FY96	3.039
GSQ FY97	3.019

12g. Discussed issues of social, cultural, or academic significance with others outside of class:

Mean

ISS FY96	3.061
ISS FY97	3.010
GSQ FY96	3.080
GSQ FY97	3.071

14. Adequateness of your education and experiences at NMSU/TRUMAN in each of the following where:

1 = Very inadequate, 2 = Inadequate, 3 = Adequate, and 4 = Very adequate

14a. Writing effectively.

Mean

ISS FY96	3.100
ISS FY97	3.092
GSQ FY96	3.258
GSQ FY97	3.247

14b. Speaking Effectively

Mean

ISS FY96	3.005
ISS FY97	3.063
GSQ FY96	3.133
GSQ FY97	3.145

14d. Using computers

Mean

ISS FY96	2.706
ISS FY97	2.887
GSQ FY96	2.848
GSQ FY97	2.948

14k. Understanding and applying mathematics

Mean

ISS FY96	2.755
ISS FY97	2.749
GSQ FY96	2.786
GSQ FY97	2.769

14q. Understanding statistical information

Mean

ISS FY96	2.740
ISS FY97	2.712
GSQ FY96	2.853
GSQ FY97	2.859

14s. Gaining a well-rounded liberal arts and sciences education

Mean

ISS FY96	3.286
ISS FY97	3.345
GSQ FY96	3.285
GSQ FY97	3.296

14u. Understanding and appreciating the arts

Mean

ISS FY96	3.038
ISS FY97	3.065
GSQ FY96	2.993
GSQ FY97	2.948

15. Adequateness of major in preparation in the following:

1=Very Adequate, 2=Inadequate, 3=Adequate, 4=Very Inadequate

15a. Knowledge of modes of inquiry or processes

Mean

ISS FY96	3.193
ISS FY97	3.179
GSQ FY96	3.379
GSQ FY97	3.367

15b. Subject Matter

Mean

ISS FY96	3.383
ISS FY97	3.412
GSQ FY96	3.457
GSQ FY97	3.461

15c. Thinking critically

Mean

ISS FY96	3.403
ISS FY97	3.409
GSQ FY96	3.461
GSQ FY97	3.509

17h. Faculty enthusiasm for core classes

1=Very Dissatisfied, 2= Dissatisfied, 3=Satisfied, 4=Very Satisfied

Mean

ISS FY96	2.831
ISS FY97	2.902
GSQ FY96	2.826
GSQ FY97	2.812

17i. Faculty enthusiasm for major courses

Mean

ISS FY96	3.427
ISS FY97	3.482
GSQ FY96	3.454

GSQ FY97	3.458
----------	-------

17j. Overall impression of LAS courses

Mean

ISS FY96	2.883
ISS FY97	2.981
GSQ FY96	2.875
GSQ FY97	2.850

17k. Overall impressions of major courses

Mean

ISS FY96	3.311
ISS FY97	3.404
GSQ FY96	3.285
GSQ FY97	3.289

17l. Academic Advising

Mean

ISS FY96	2.794
ISS FY97	2.844
GSQ FY96	2.655
GSQ FY97	2.645

17am/an. Library services

Mean

ISS FY96	3.239
ISS FY97	3.209
GSQ FY96	3.162
GSQ FY97	3.143

17bd/be/be. Computer facilities

Mean

ISS FY96	2.222
ISS FY97	2.473
GSQ FY96	2.081
GSQ FY97	2.254

18. Overall satisfaction with freshman week

1=Very dissatisfied, 2=dissatisfied, 3=satisfied, 4=very satisfied

Mean

ISS FY96	2.991
ISS FY97	3.056
GSQ FY96	not asked
GSQ FY97	not asked

19, 20. Reading beyond course assignments (e.g., for personal interest and growth)—Percent

Hours/Week	0	1-2	3-5	6-10	11-15	16+
ISS96	28.8	38.9	20.8	8.0	2.0	1.5
ISS97	28.5	44.0	20.2	4.4	1.8	1.1
GSQ96	21.3	43.1	22.2	8.2	2.9	2.3
GSQ97	22.3	40.7	23.0	9.4	2.5	2.1

24-25. Satisfaction with first major

1=Very dissatisfied, 2=dissatisfied, 3=satisfied, 4=very satisfied

Mean

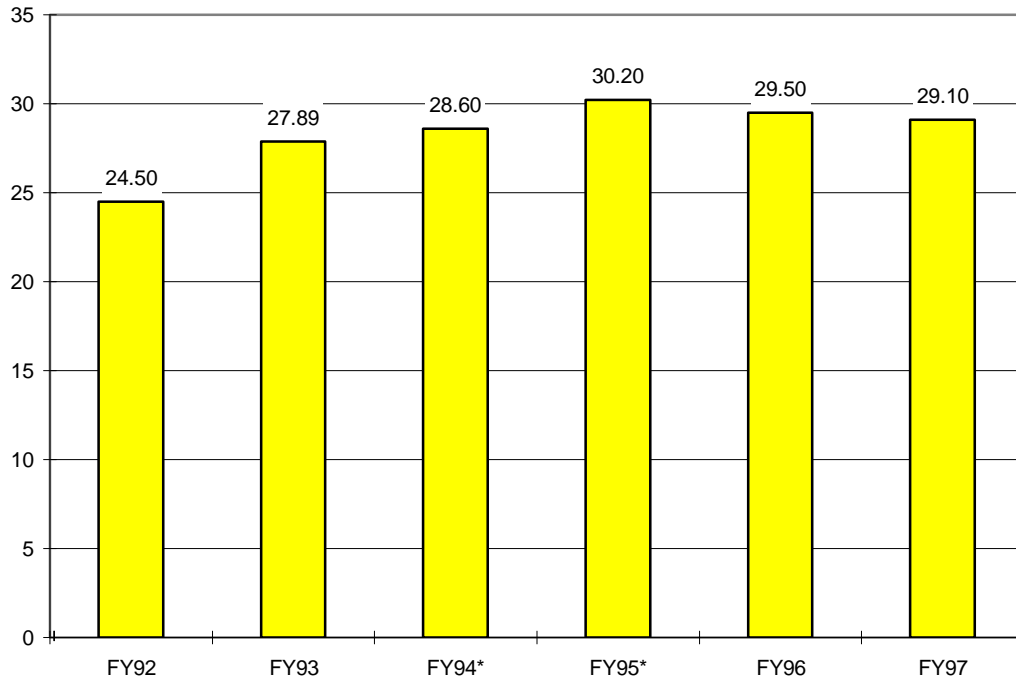
ISS FY96	3.387
ISS FY97	3.406
GSQ FY96	3.332
GSQ FY97	3.005

(General editor's notes):The attractiveness of ISS data is that it gives immediate feedback. The problem with it is the return rate of roughly 40% is not high. This should be solved under the new Liberal Studies Program, since the survey is to be embedded in the junior interdisciplinary seminar.

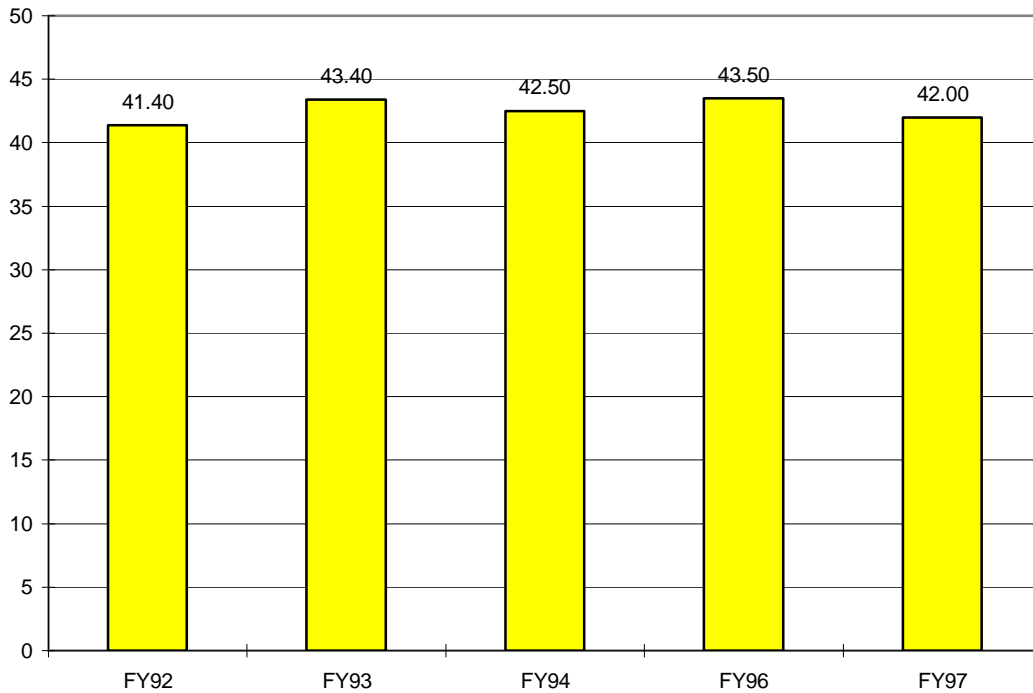
The attractiveness of GSQ is that it gives nearly a 100% response rate and the students have more experience at the university. Possibly, their cynicism also grows. GSQ takes much longer to show changes at the university.

1. Differences in the mean for core and major courses continues to be significant. Perhaps, that is to be expected but should still be a concern for a liberal arts and sciences institution. Courses in the core are not considered to be particularly challenging.
2. Newer students under the ISS seem to show more interest in attending graduate school. The present good job market, however, may lessen the likelihood for recently graduating students to attend graduate school.
3. Cost and academic reputation are significant factors in attracting students to enroll at Truman.
4. The increased amount of money going to computer facilities seems well justified, given general student dissatisfaction in this area.
5. Academic advising is still not where it should be.
See Volume 3 for data in different areas.

Percent--Highest Degree Planned-- Doctorate or Professional School (GSQ)

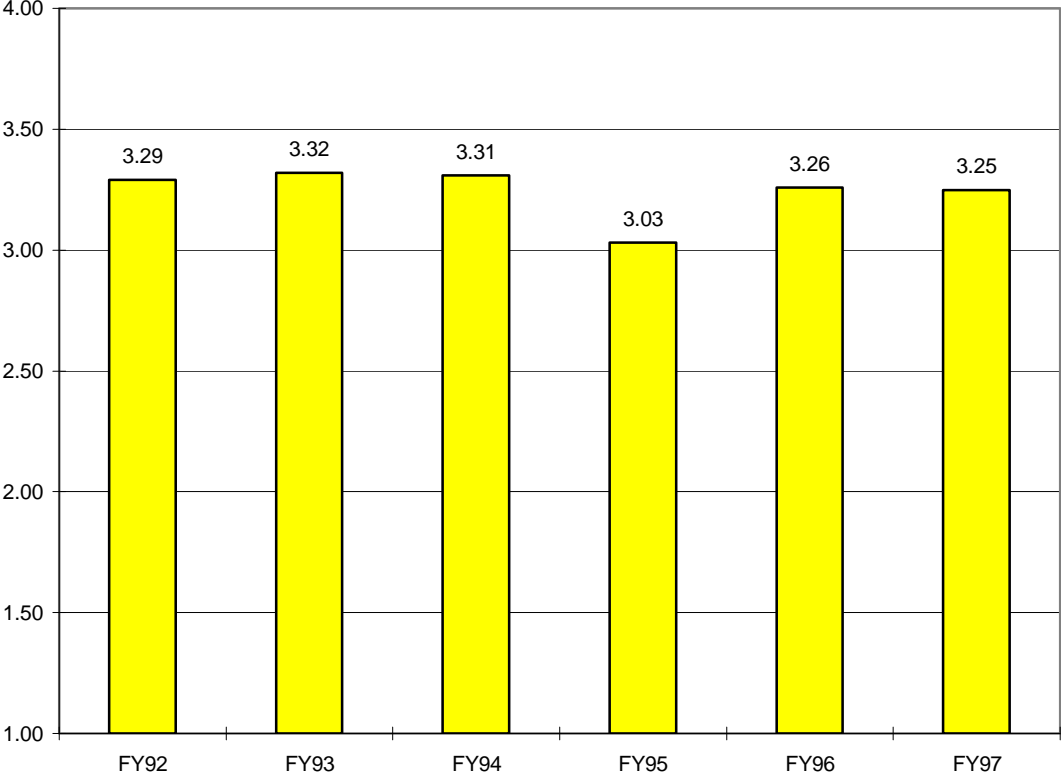


Percent Planning to Attend Grad School (Full or Part Time)-GSQ

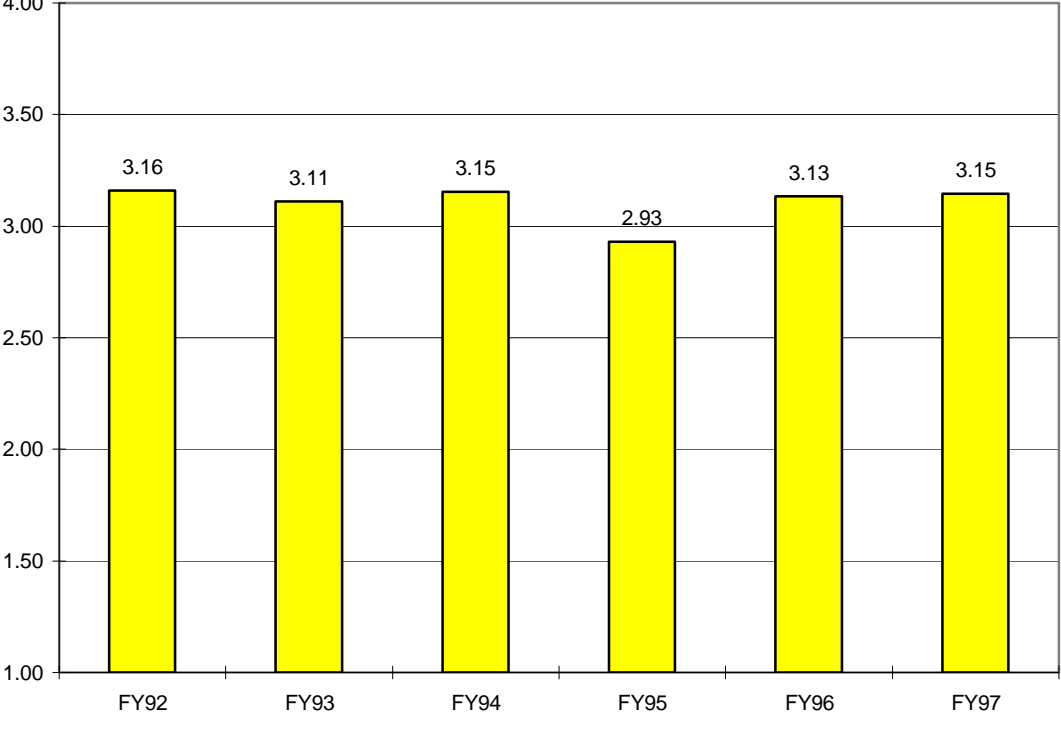


FY 95 Data Not Available for Bottom Graph

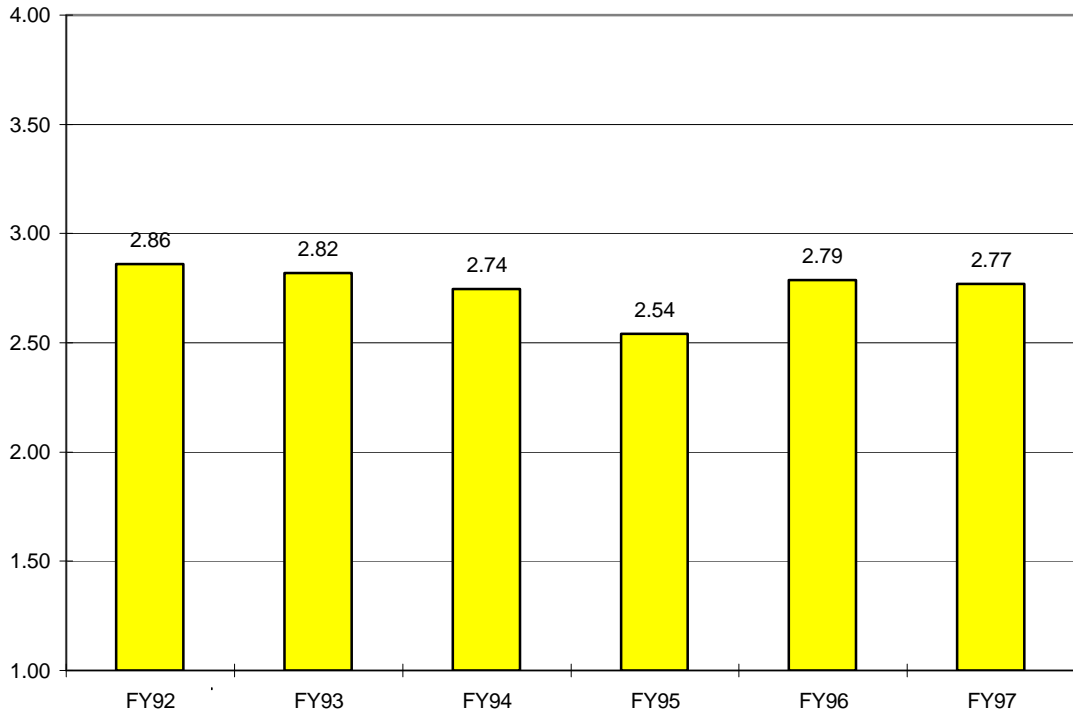
Writing Effectively (1=low, 4=high) Average Score-GSQ



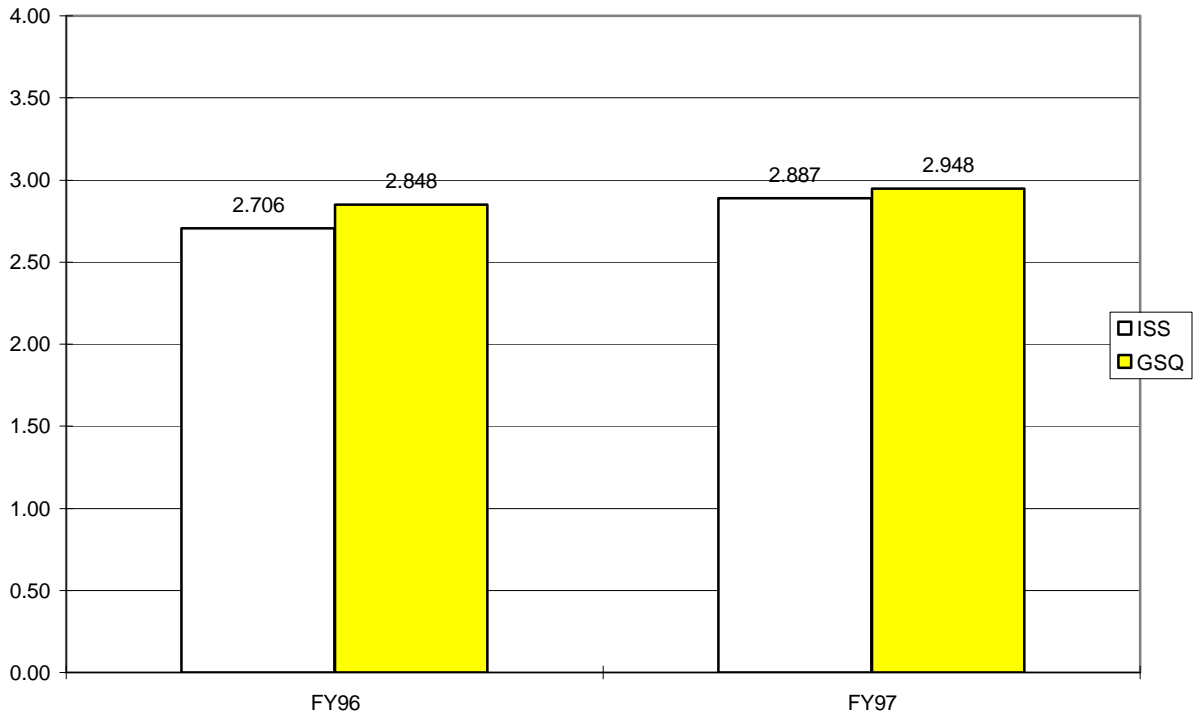
Speaking Effectively (1=low, 4=high)--GSQ-Average



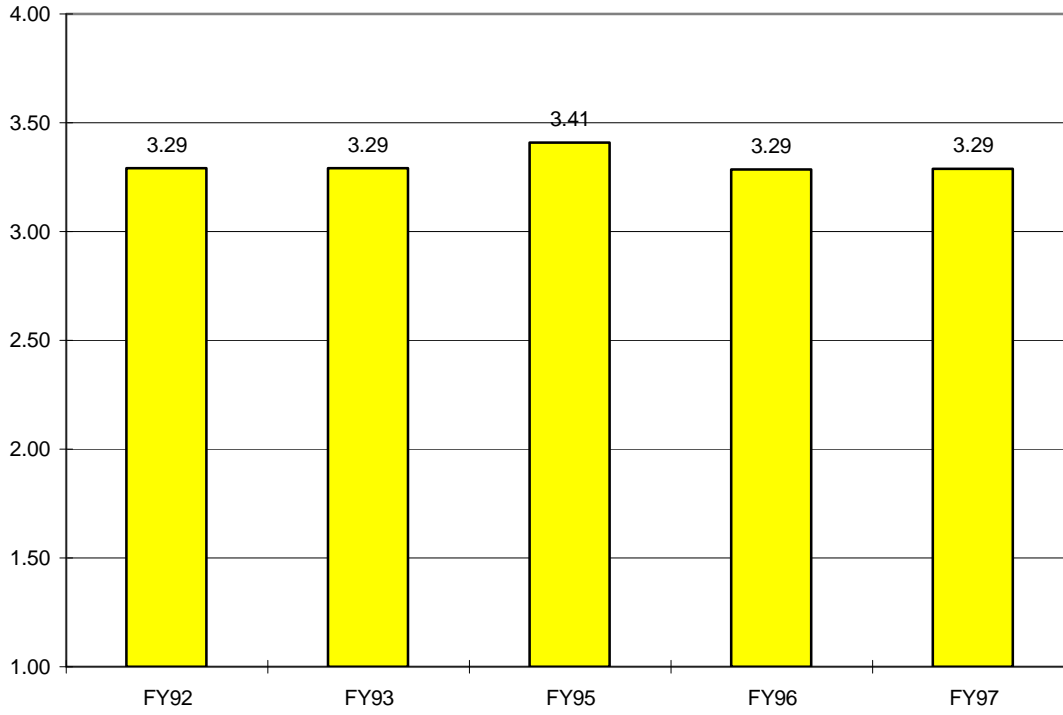
Adequacy in Math (1=low, 4=high) MEAN-GSQ



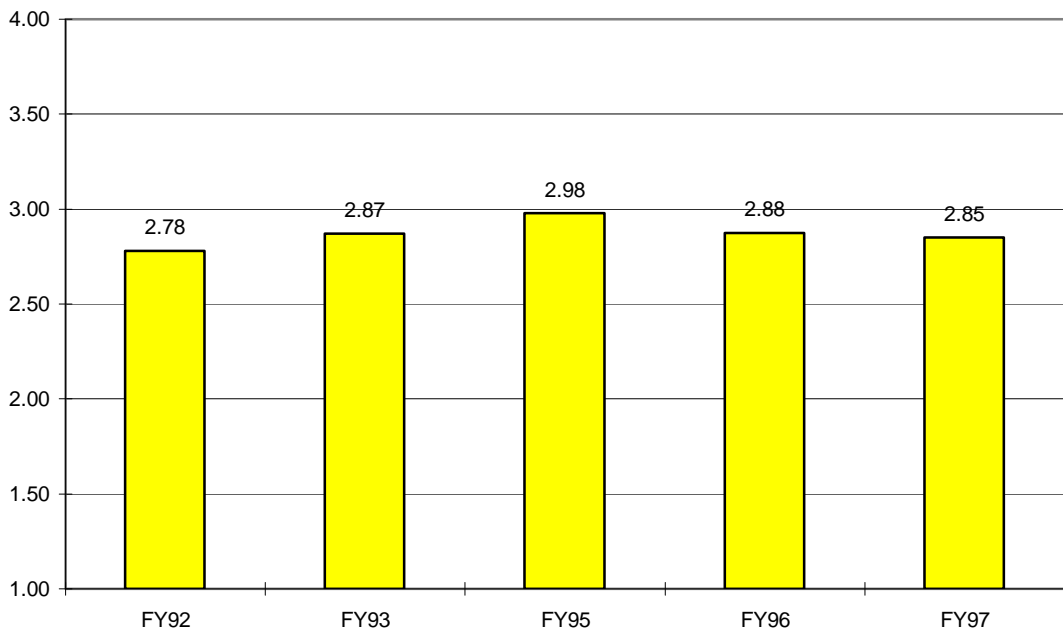
Using Computers Effectively-Average--ISS & GSQ



Overall Impression of Major Courses (1=low, 4=high) Average-GSQ

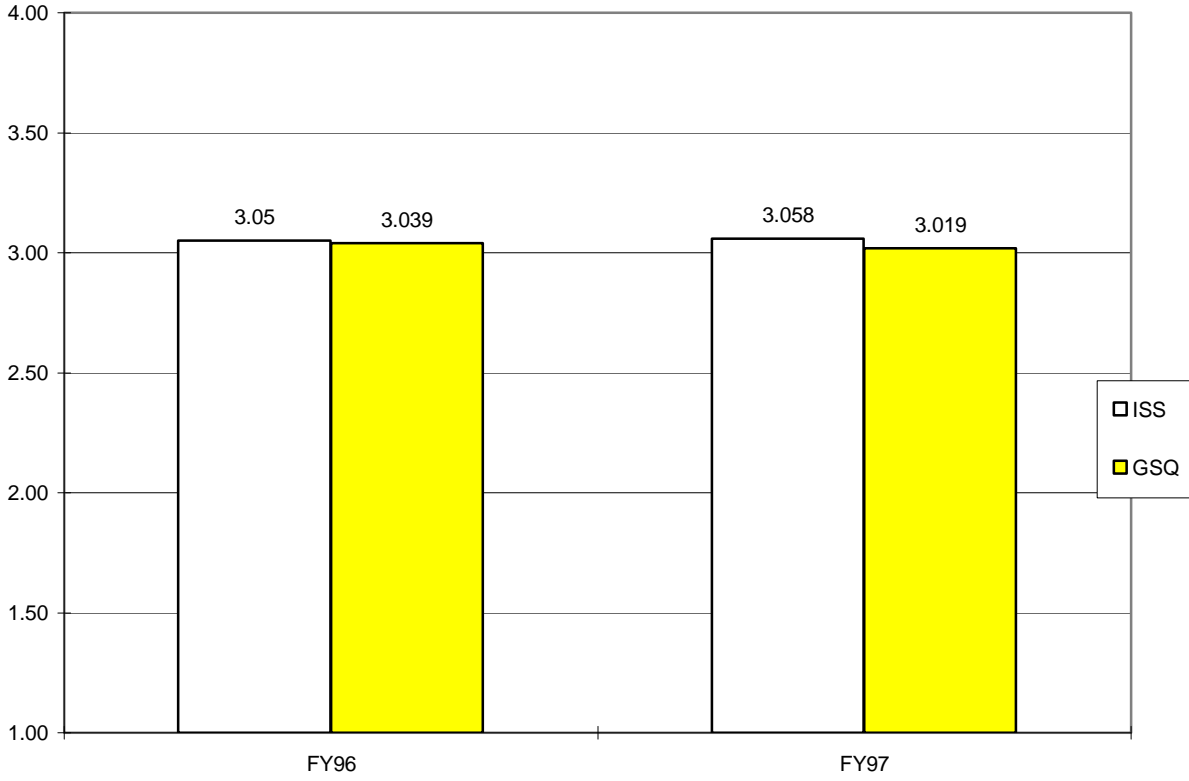


Overall Impression of Gen Ed Courses--Average GSQ (1=low, 4=high)



FY 94 Data Not Available

**Applying the Knowledge & Skills in One Discipline to Another
(1=Very Inadequate, 4=Very Adequate)**



Gaining a Well-rounded LAS Education (1=Very Inadequate, 4=Very Adequate)

