

Chapter VII: FRESHMAN WEEK SURVEY

Who takes it?

Fall first-time students.

When is it administered?

At the end of Freshman Week (in August).

How long does it take for a student to complete the instrument?

30 minutes.

What office administers it?

Freshman Week Committee sends copies to the freshman colleges. The instructors during Freshman Week have the students take it during the last day of the week. The tests eventually go back through the colleges to the Assessment and Testing Office for tabulation.

Who originates the survey?

Freshman Week Committee.

When are results typically available?

Beginning of October. The results are tabulated by the Assessment and Testing Office.

What type of information is sought?

The survey provides information on whether the student felt welcomed in the university, classroom, living and local community. The survey also asks students if they know where they can get help for various problems, about their comfort level in approaching faculty and staff for assistance, willingness to join in co-curricular activities, understanding the goals of the liberal arts and science education, and active learning. Students are also asked whether they participated in writing and speaking, as well as reading, computer, research, and library assignments during Freshmen Week. The incoming students are also asked to rate overall group activities, the CHOICES program, division activities, the freshman week class, residential hall/college activities, and various "social / fun" events.

From whom are the results available?

Freshman Week Committee.

Distribution is regularly made available to whom?

Freshman Week Committee, Division Heads and the Vice President for Academic Affairs.

Are the results available by division or discipline?

The objective questions (bubble sheets) are available by division and discipline.

Are the results comparable to data of other universities?

No.

Comments:

The following is data taken from the survey given to first year students at the end of the Freshman Week.

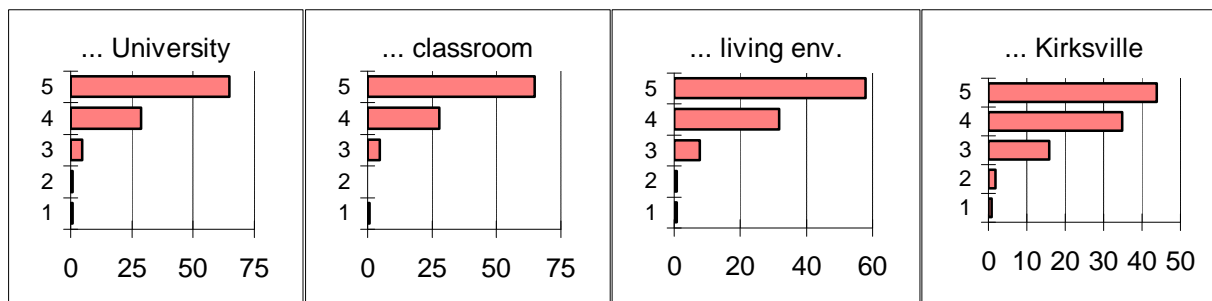
For the first year at Truman in Fall 1998, all first year students participated in an extended freshman course, continuing with the same group of students in a class during the Fall semester. It will be interesting to compare the retention rates between these students and those from previous years where most students' Freshman Week courses ended at the conclusion of Freshman Week. The intent is that by keeping students together from Freshman Week through the first (and maybe even a second) semester, their adjustment to the university will be easier academically and socially, resulting in potentially higher retention rates.

1997 FRESHMAN WEEK SURVEY SUMMARY OF FINDINGS

Number of total respondents = 1603

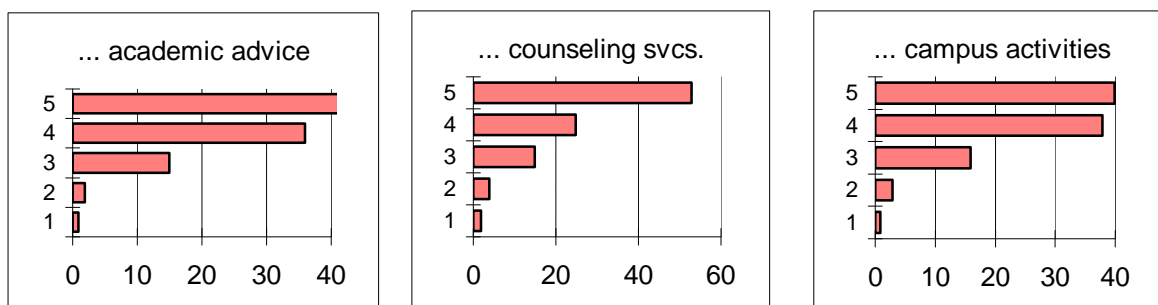
The University Community

		disagree			agree	
		1	2	3	4	5
1. I feel welcomed into the University community as a whole.	n	13	9	74	457	1036
	%	1	1	5	29	65
2. I feel welcomed into the classroom community.	n	11	7	76	455	1041
	%	1	0	5	28	65
3. I feel welcomed into the community within my living environment.	n	13	18	123	512	922
	%	1	1	8	32	58
4. I feel welcomed into the Kirksville community.	n	16	40	264	566	704
	%	1	2	16	35	44

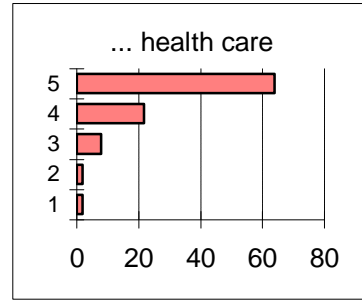
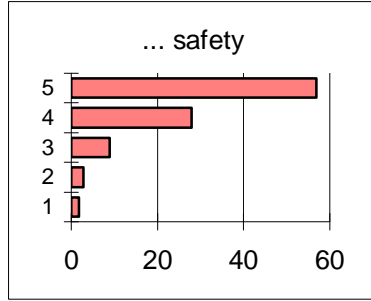
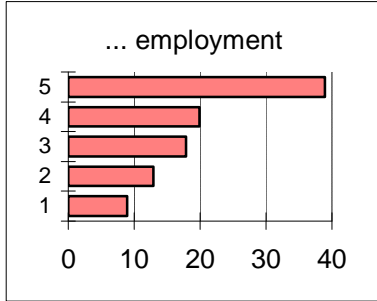


Understanding University Services

5. I know where to get academic advice.	n	16	38	239	575	722
	%	1	2	15	36	45
6. I know where to receive counseling services.	n	35	71	237	395	852
	%	2	4	15	25	53
7. I know where to find out about campus activities and how to get involved.	n	19	56	261	608	645
	%	1	3	16	38	40

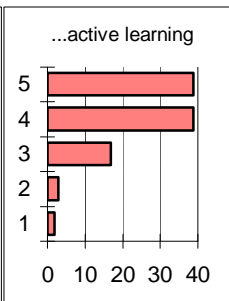
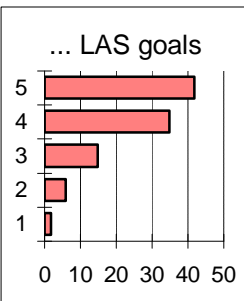
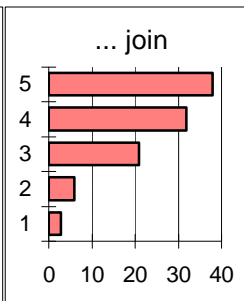
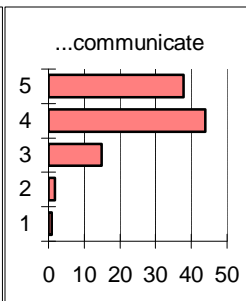
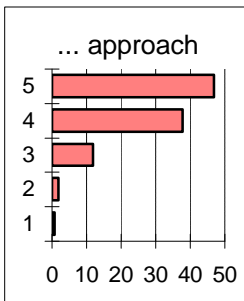


8. I know where to go on campus to get information about employment.	n	152	211	284	318	624
	%	9	13	18	20	39
9. I know where to go if I feel my personal safety is threatened.	n	29	54	141	448	918
	%	2	3	9	28	57
10. I know where to go for health care concerns.	n	36	39	136	347	1031
	%	2	2	8	22	64



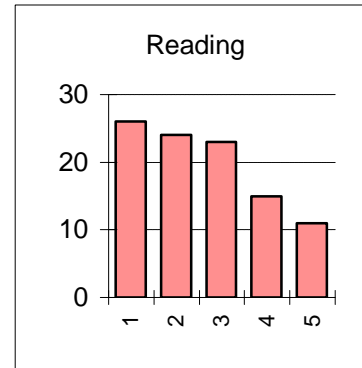
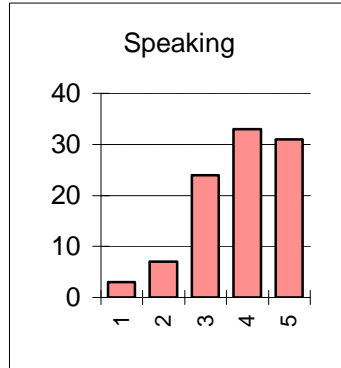
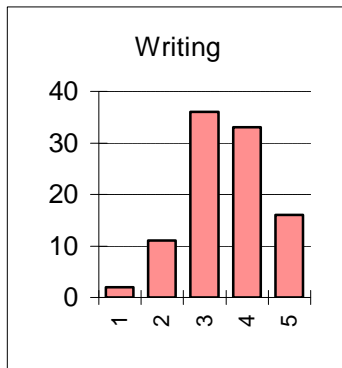
From my participation in Freshman Week, ...

11. I feel more comfortable in approaching a faculty/staff member for assistance.	n	18	25	190	608	748
	%	1	2	12	38	47
12. I am better able to communicate with the faculty/staff.	n	15	30	234	703	606
	%	1	2	15	44	38
13. I am more likely than before to join in co-curricular activities.	n	50	89	330	516	602
	%	3	6	21	32	38
14. I understand better the goals of a liberal arts and sciences education.	n	27	89	240	556	676
	%	2	6	15	35	42
15. I understand better what it means to be involved in active learning experiences.	n	26	51	267	627	618
	%	2	3	17	39	39

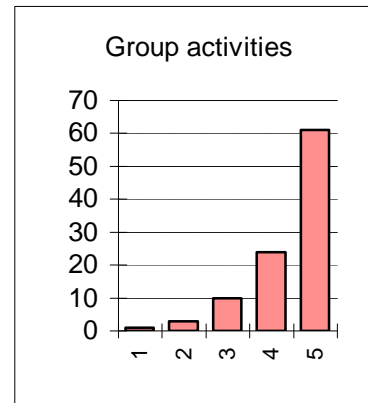
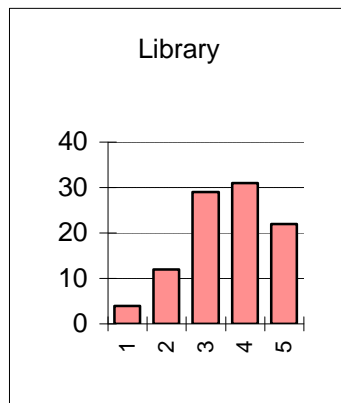
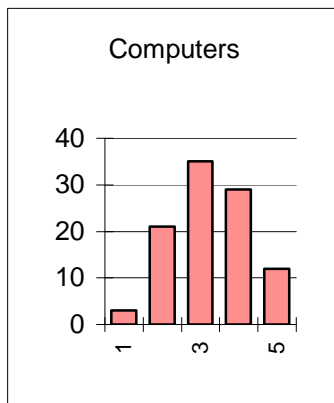


... please indicate how often your Freshman Week class participated in the activities listed, ...

		not at all			extensively	
		1	2	3	4	5
16. Writing	n	31	184	578	534	257
	%	2	11	36	33	16
17. Speaking	n	46	118	390	536	493
	%	3	7	24	33	31
18. Reading assignments	n	421	382	373	234	171
	%	26	24	23	15	11

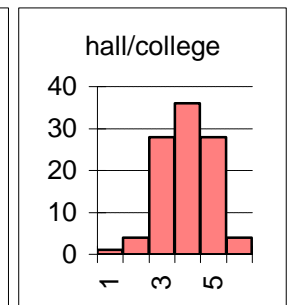
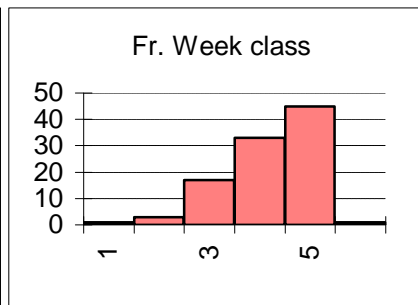
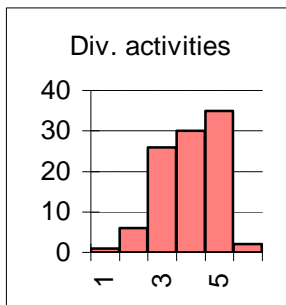
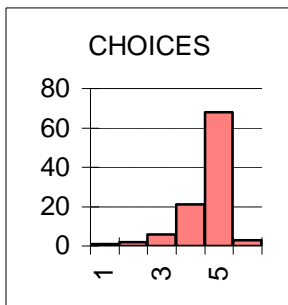


19. Using computers	n	41	329	562	463	187
	%	3	21	35	29	12
20. Using the library to access information	n	60	198	461	499	360
	%	4	12	29	31	22
21. Group activities	n	11	48	163	389	971
	%	1	3	10	24	61



... indicate whether you found the experience strongly negative, strongly positive, or something in between

		negative			positive		N.R.
		1	2	3	4	5	
22. CHOICES program	n	10	26	103	334	1088	42
	%	1	2	6	21	68	3
23. Division activities on Wednesday	n	17	92	418	479	562	35
	%	1	6	26	30	35	2
24. The Freshman Week class	n	17	56	265	526	717	22
	%	1	3	17	33	45	1
25. Residence hall/college activities	n	14	63	441	570	452	63
	%	1	4	28	36	28	4



26. Sunday ice cream on the mall	n	38	105	508	384	292	276
	%	2	7	32	24	18	17
27. Monday night variety show/dance/movie/sports	n	30	77	432	372	368	324
	%	2	5	27	23	23	20
28. Tuesday night casino night/Coffee House	n	45	114	470	321	239	414
	%	3	7	29	20	15	26
29. Wednesday night karaoke	n	62	97	458	319	270	397
	%	4	6	29	20	17	25
30. Thursday night "Singled Out" & Hawaiian luau dance	n	43	94	357	380	408	321
	%	3	6	22	24	25	20

