

# Chapter XI: INSTITUTIONAL STUDENT SURVEY AND GRADUATING STUDENT QUESTIONNAIRE

## **Institutional Student Survey**

Who takes it?

Sophomores and juniors (45-75 credit hours). Taking and returning the survey is not mandatory (though this may change during the new Liberal Studies Program).

When is it administered?

Spring of each year.

How long does it take the student to complete the instrument?

20 minutes.

What office administers it?

Assessment and Testing.

Who originates the survey?

The questions typically are determined by the Vice President for Academic Affairs and the Assessment Committee.

When are results typically available?

The summer following the end of that fiscal year.

What type of information is sought?

The ISS asks about the highest academic degree sought, selection of Truman, future plans for employment and graduate school, knowledge and opinions on assessment, time spent outside of class on course-related work, writing required, and the challenge of courses. Students are also asked how often they dealt with other students in various academic and co-curricular contexts, used the library, attended cultural or co-curricular events, used writing centers and other labs or tutorial services, and applied knowledge and skills from one area in another. Students are asked how many faculty members they know well enough to get a letter of recommendation. Students are then asked how effective their education has been in regard to an extensive list of academic and social skills. The students rate various aspects of their major. Students respond as to how satisfied they are with the faculty and other aspects of the campus including a variety of services, offices, and facilities. Students are asked about Freshman Week, discrimination, and the amount of time spent in various activities in an average week. Any additional student comments may be added.

From whom are the results available?

Assessing and Testing.

Distribution is normally made to?

President, VPAA, Division Heads, Assessment Committee, and selected administration.

Are the results available by division or discipline?

Yes.

Are the results comparable to data of other universities?

No.

### **Graduating Student Questionnaire**

Who takes it?

All graduating seniors.

When is it administered?

A short time before graduation.

How long does it take for the student to complete the instrument?

20 minutes.

What office administers it?

It is sent out in a graduation packet by the Registrar's Office.

Who originates the survey?

The Vice President for Academic Affairs and the University Assessment Committee.

When are the results typically available?

For the fiscal year, in late June or July.

What type of information is sought?

The GSQ questions are virtually identical with those of the ISS. The GSQ asks about the highest academic degree sought, selection of Truman, future plans for employment and graduate school, knowledge and opinions on assessment, time spent outside of class on course-related work, writing required, and the challenge of courses. Students are also asked how often they dealt with other students in academic and co-curricular contexts, used the library, attended cultural or co-curricular events, used writing centers and other labs or tutorial services, and applied knowledge and skills from one area in another. Students are asked how many faculty members they know well enough to get a letter of recommendation. Students are asked how effective their education has been in regard to an extensive list of academic and social skills. The students rate various aspects of their major. Students respond as to how satisfied they are with the faculty and other aspects of campus including a variety of services, offices, and facilities. Students are asked about Freshman Week, discrimination, and the amount of time spent in various activities in an average week. Any additional student comments may be added.

From whom are the results available?

Assessment and Testing Office.

Distribution regularly made available to whom?

University, division, and discipline averages are sent to the President, VPAA, Division Heads, Assessment Committee, and selected administrators.

Are the results available by division or discipline?

Yes.

Are the results comparable to data of other universities?

No.

Note: The response rate for the ISS is about 41-42%. For the GSQ it is close to 100%. Questions were changed for these surveys several years ago and so some older comparisons are not possible. The complete survey results for FY98 are found in Volume 3.

**The numbers for questions correspond to the overall report found in Volume 3.**

**1. Percentage of Truman students planning doctorate or professional school:**

ISS-FY97	25.8%
ISS-FY98	24.6
GSQ-FY97	29.1
GSQ-FY98	27.7

**2. Truman was first choice:**

ISS-FY97	64.6%
ISS-FY98	61.0
GSQ-FY97	64.7
GSQ-FY 98	65.2

**3. Planning to attend graduate school, full or part time:**

ISS-FY97	64.8%
ISS-FY98	64.9
GSQ-FY97	42.0
GSQ-FY 98	41.4

**4. Would you choose Truman again?**

	Definitely Yes	Probably Yes
ISS-FY97	37.1%	45.8%
ISS-FY98	34.8	46.4
GSQ-FY97	29.3	48.7
GSQ-FY 98	28.7	48.6

**5. Reasons--for attending Truman: First Second**

ISS-FY97	Cost 39.4%	Cost 23.4% *
ISS-FY98	Cost 36.3	Acad. Reputation 22.0
GSQ-FY97	Cost 41.9	Cost 24.2% *
GSQ-FY 98	Cost 40.0	Cost 23.1*

\*For ISS97, GSQ97 and GSQ98, academic reputation had the second highest percentage for first and second reason.

**6. Assessment Program**

ISS97	I know and understand it	57.1%
ISS98	I know and understand it	53.1
GSQ97	I know and understand it	75.4
GSQ98	I know and understand it	75.0

**8. Class Hours Per Week Spent on Course-Related Work:**

0-5    6-10    11-15    16-20    21-25    26-30    31-

ISS97	4.8	16.2	23.1	24.0	15.2	9.3	7.3
ISS98	5.0	18.5	24.0	24.1	15.4	9.1	3.9
GSQ97	4.8	19.2	20.4	23.7	16.1	9.6	6.2
GSQ98	6.7	20.3	23.0	20.6	15.6	7.8	6.0

**10. Major Courses Challenging--MEAN (1=never, 4=very often)?**

ISS97	3.394
ISS98	3.391
GSQ97	3.208
GSQ98	3.360

**11. Core Courses Challenging--MEAN (1=never, 4=very often)?**

ISS97	2.925
ISS98	2.876
GSQ97	2.672
GSQ98	2.738

Number of times you were involved in the following activities during the school year where:  
 1 = never, 2 = seldom, 3 = often, and 4 = very often, and n/a = not applicable

**12a. Interacted with people from other cultures:**

Mean

ISS FY97	2.557
ISS FY98	2.570
GSQ FY97	2.684
GSQ FY98	2.611

**12d. Communicated with a faculty member out of class:**

Mean

ISS FY97	2.941
ISS FY98	2.824
GSQ FY97	3.145
GSQ FY98	3.110

**12e. Attended a cultural event (e.g. art exhibit, play, concert, campus lectures):**

Mean

ISS FY97	2.697
ISS FY98	2.679
GSQ FY97	2.629
GSQ FY98	2.648

**12f. Applied the knowledge and skills gained in one discipline to learning in other disciplines:**

Mean

ISS FY97	3.058
ISS FY98	3.016
GSQ FY97	3.019
GSQ FY98	3.042

**12g. Discussed issues of social, cultural, or academic significance with others outside of class:**

Mean

ISS FY97	3.010
ISS FY98	2.977
GSQ FY97	3.071
GSQ FY98	3.050

**14. Adequateness of your education and experiences at NMSU/TRUMAN in each of the following where:**

1 = Very inadequate, 2 = Inadequate, 3 = Adequate, and 4 = Very adequate

**14a. Writing effectively.**

Mean

ISS FY97	3.092
ISS FY98	3.030
GSQ FY97	3.247
GSQ FY98	3.224

**14b. Speaking Effectively**

Mean

ISS FY97	3.063
ISS FY98	3.031
GSQ FY97	3.145
GSQ FY98	3.100

**14d. Using computers**

Mean

ISS FY97	2.887
ISS FY98	2.982
GSQ FY97	2.948
GSQ FY98	2.977

**14k. Understanding and applying mathematics**

Mean

ISS FY97	2.749
ISS FY98	2.790
GSQ FY97	2.769
GSQ FY98	2.714

**14q. Understanding statistical information**

Mean

ISS FY97	2.712
ISS FY98	2.750
GSQ FY97	2.859
GSQ FY98	2.860

**14s. Gaining a well-rounded liberal arts and sciences education**

Mean

ISS FY97	3.345
ISS FY98	3.310
GSQ FY97	3.296
GSQ FY98	3.253

**14u. Understanding and appreciating the arts**

Mean

ISS FY97	3.065
ISS FY98	3.032
GSQ FY97	2.948
GSQ FY98	2.980

**15. Adequateness of major** in preparation in the following:  
 1=Very Adequate,2=Inadequate,3=Adequate, 4=Very Inadequate

**15a. Knowledge of modes of inquiry or processes**

Mean

ISS FY97	3.179
ISS FY98	3.142
GSQ FY97	3.367
GSQ FY98	3.380

**15b. Subject Matter**

Mean

ISS FY97	3.412
ISS FY98	3.374
GSQ FY97	3.461
GSQ FY98	3.435

**15c. Thinking critically**

Mean

ISS FY97	3.409
ISS FY98	3.383
GSQ FY97	3.509
GSQ FY98	3.532

**17h. Faculty enthusiasm for core classes**

1=Very Dissatisfied, 2= Dissatisfied, 3=Satisfied,  
 4=Very Satisfied

Mean

ISS FY97	2.902
ISS FY98	2.785
GSQ FY97	2.812
GSQ FY98	2.768

**17i. Faculty enthusiasm for major courses**

Mean

ISS FY97	3.482
ISS FY98	3.374
GSQ FY97	3.458
GSQ FY98	3.410

**17j. Overall impression of LAS courses**

Mean

ISS FY97	2.981
ISS FY98	2.920
GSQ FY97	2.850
GSQ FY98	2.874

**17k. Overall impressions of major courses**

Mean

ISS FY97	3.404
ISS FY98	3.325
GSQ FY97	3.289
GSQ FY98	3.300

**17o. Academic Advising**

Mean

ISS FY97	2.844
ISS FY98	2.743
GSQ FY97	2.645
GSQ FY98	2.636

**17am/an. Library services**

Mean

ISS FY97	3.209
ISS FY98	3.198
GSQ FY97	3.143
GSQ FY98	3.149

**17be/bf. Computer facilities**

Mean

ISS FY97	2.473
ISS FY98	2.454
GSQ FY97	2.254
GSQ FY98	2.264

**18. Overall satisfaction with freshman week**

1=Very dissatisfied, 2=dissatisfied, 3=satisfied, 4=very satisfied

Mean

ISS FY97	3.056
ISS FY98	3.019
GSQ FY97	not asked
GSQ FY98	not asked

**19, 20. Reading beyond course assignments** (e.g., for personal interest and growth)—Percent

Hours/Week	0	1-2	3-5	6-10	11-15	16+
ISS97	28.5	44.0	20.2	4.4	1.8	1.1
ISS98	28.3	43.7	19.7	6.2	0.7	1.5
GSQ97	22.3	40.7	23.0	9.4	2.5	2.1
GSQ98	21.5	42.3	21.5	9.4	2.9	2.3

**24-25. Satisfaction with first major**

1=Very dissatisfied, 2=dissatisfied, 3=satisfied, 4=very satisfied

Mean

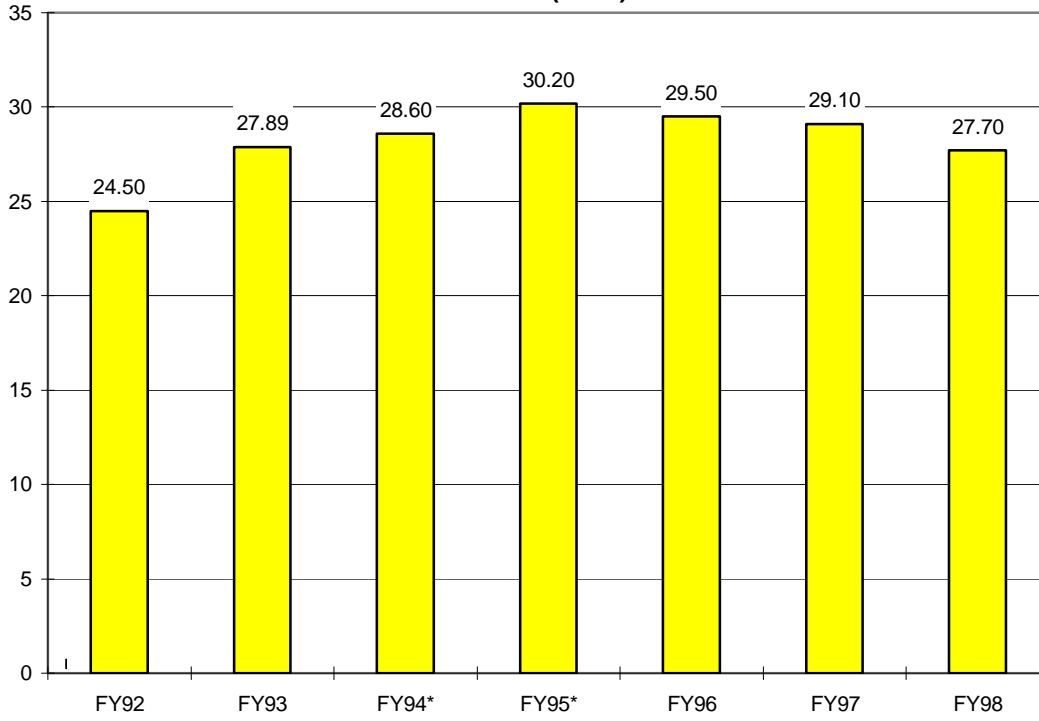
ISS FY97	3.406
ISS FY98	3.217
GSQ FY97	3.005
GSQ FY98	3.177

(General editor's notes):The attractiveness of ISS data is that it gives immediate feedback. The problem with it is the return rate of roughly 40% is not high. This should be solved under the new Liberal Studies Program, since the survey is to be embedded in the junior interdisciplinary seminar.

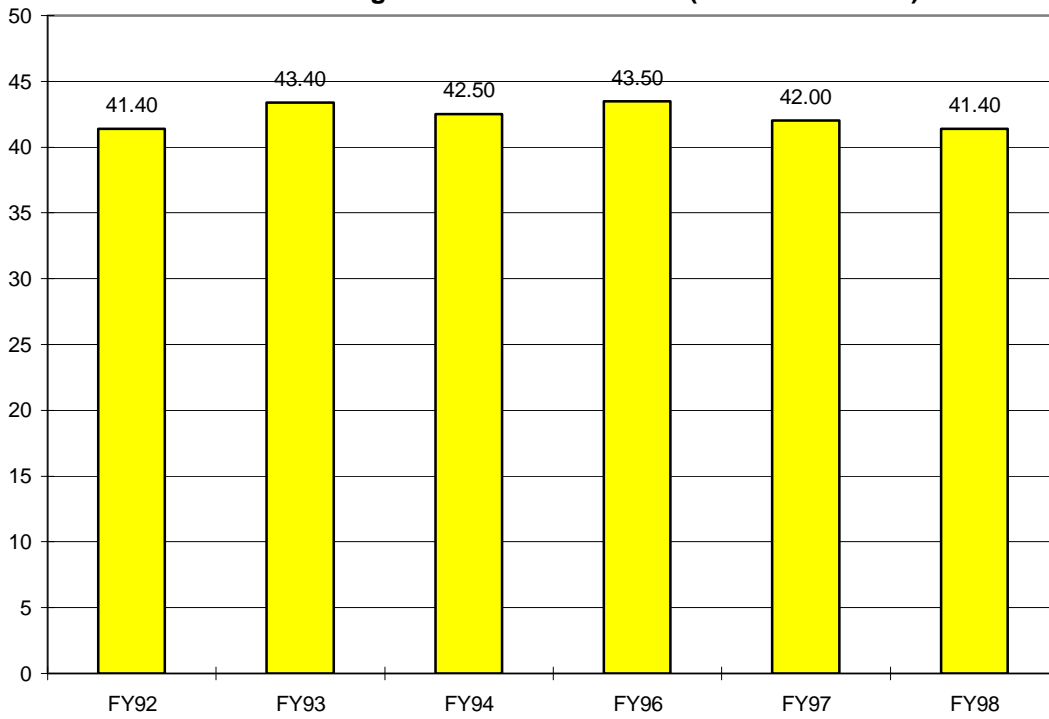
The attractiveness of GSQ is that it gives nearly a 100% response rate and the students have more experience at the university. Possibly, their cynicism also grows. GSQ takes much longer to show changes at the university.

1. Differences in the mean for core and major courses continues to be significant. Perhaps, that is to be expected but should still be a concern for a liberal arts and sciences institution. Courses in the core are not considered to be particularly challenging.
2. Newer students under the ISS seem to show more interest in attending graduate school. The present good job market, however, may lessen the likelihood for recently graduating students to attend graduate school.
3. Cost and academic reputation are significant factors in attracting students to enroll at Truman.
4. The increased amount of money going to computer facilities seems well justified, given general student dissatisfaction in this area.
5. Academic advising is still not where it should be.  
See Volume 3 for data in different areas.

**Percent--Highest Degree Planned-- Doctorate or Professional School (GSQ)**

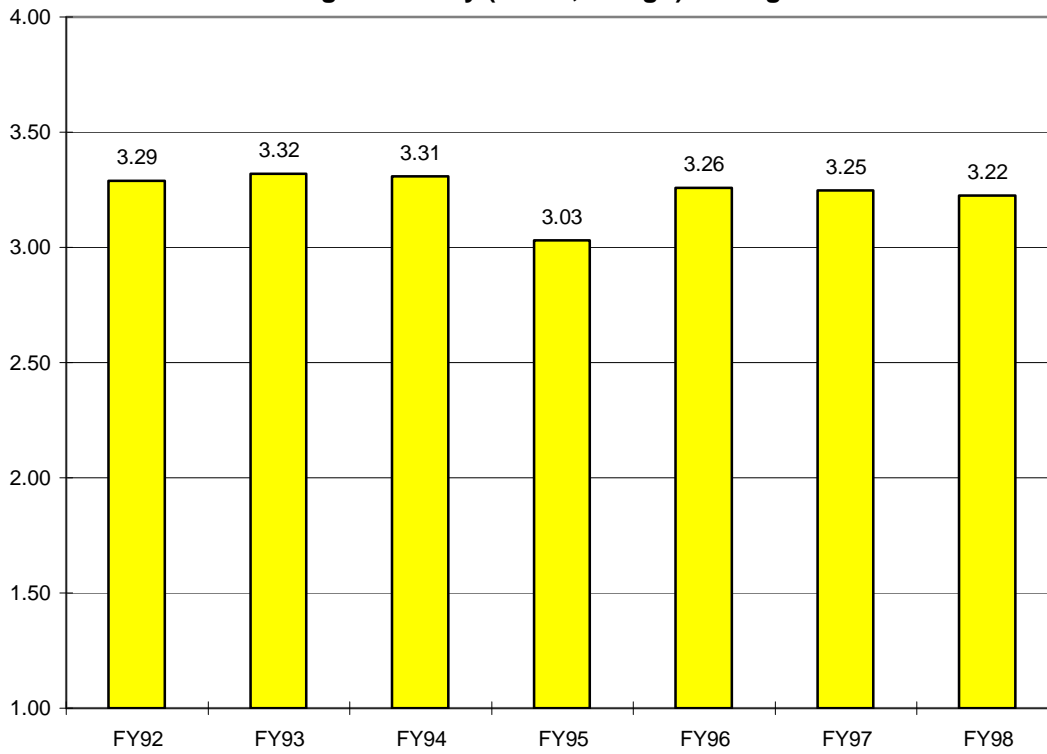


**Percent Planning to Attend Grad School (Full or Part Time)-GSQ**

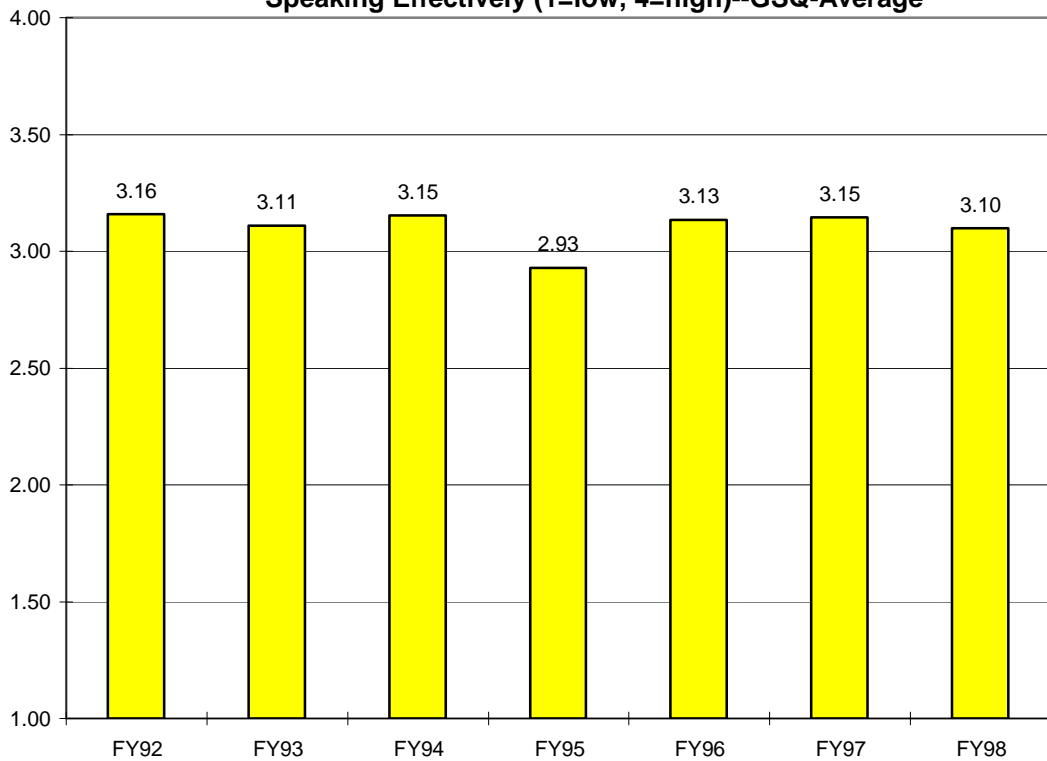


FY 95 Data Not Available for Bottom Graph

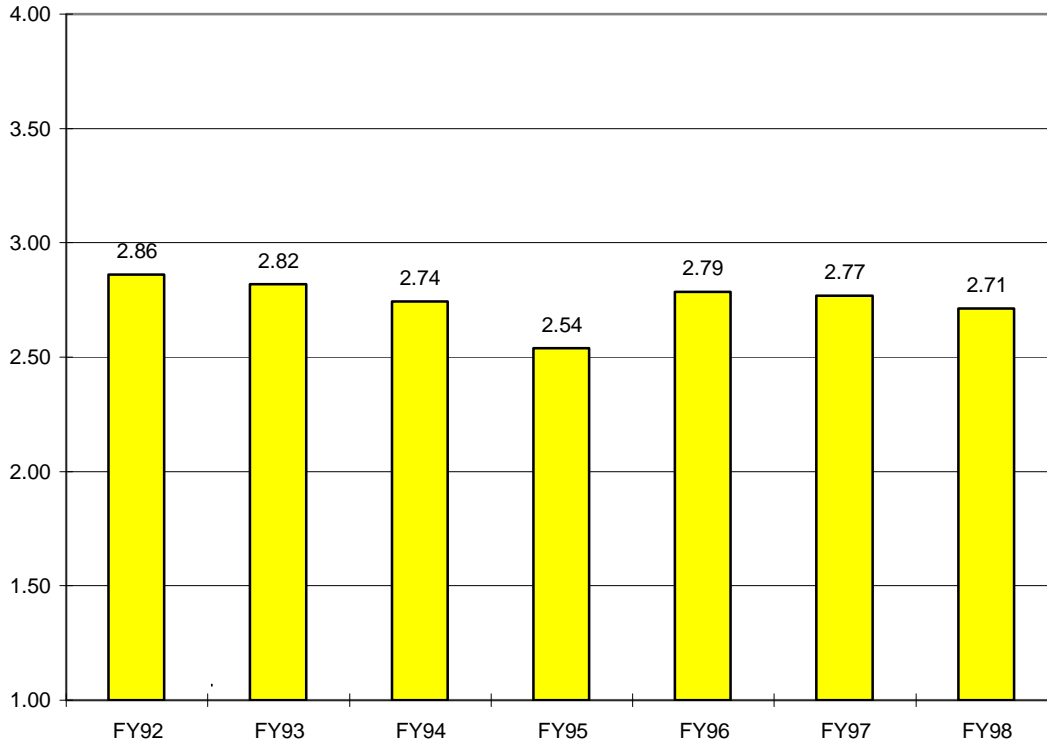
**Writing Effectively (1=low, 4=high) Average Score-GSQ**



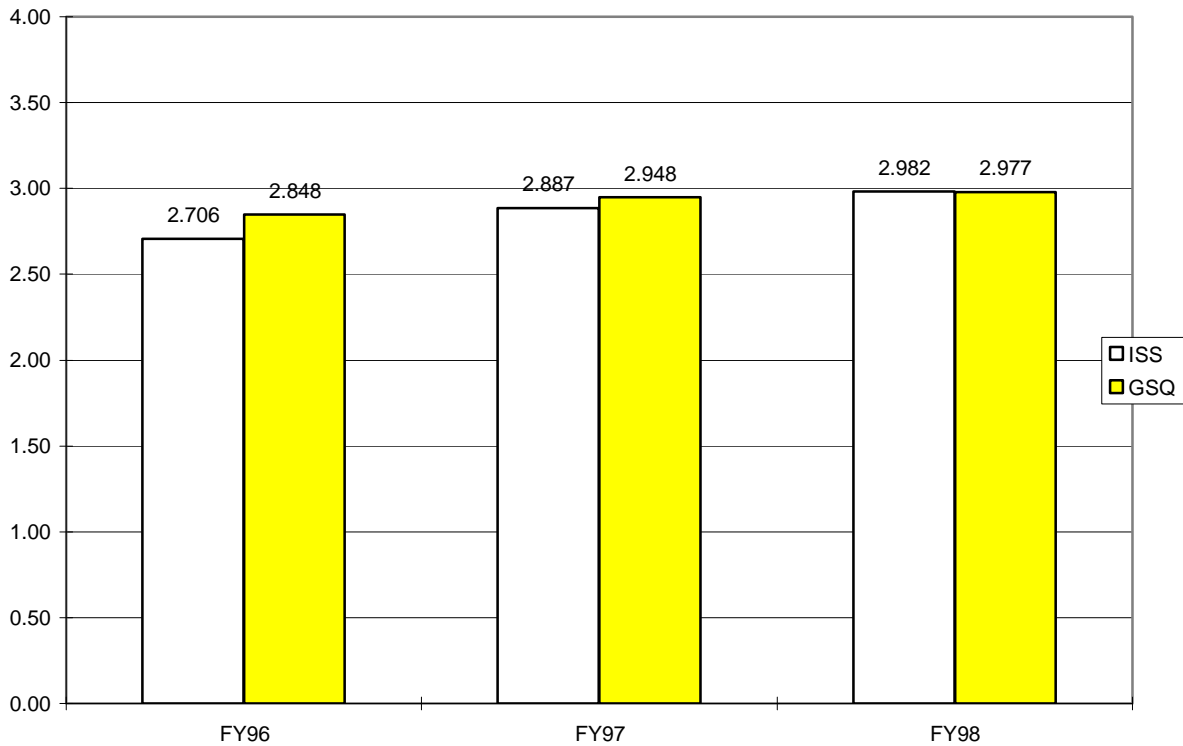
**Speaking Effectively (1=low, 4=high)--GSQ-Average**



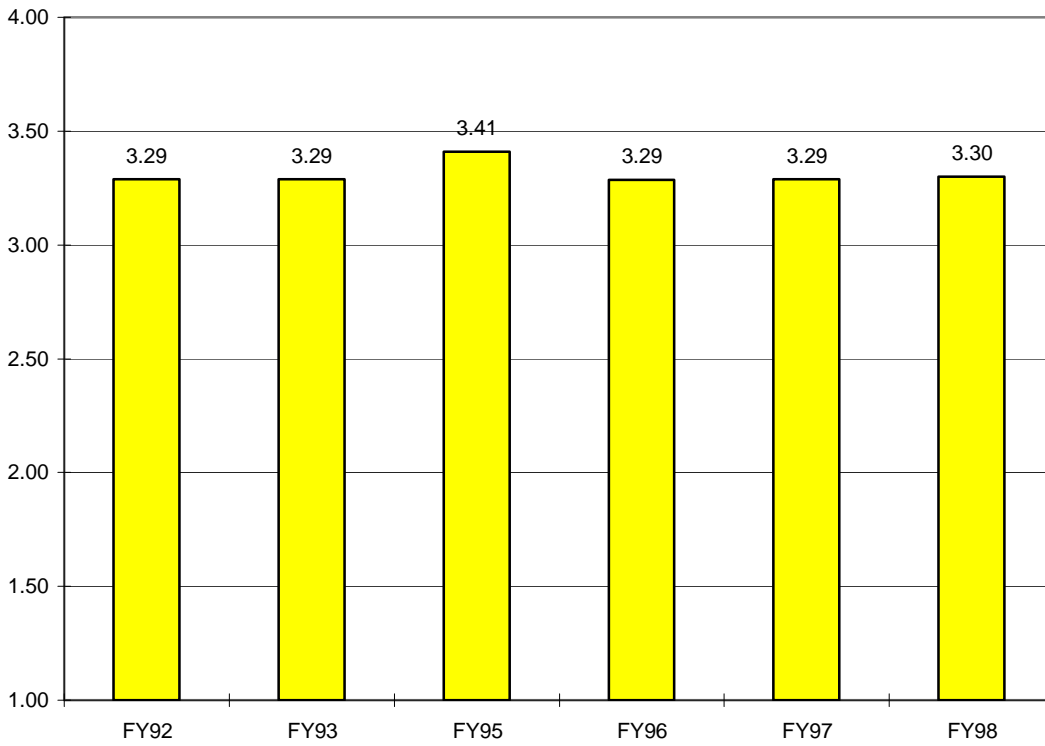
**Adequacy in Math (1=low, 4=high) MEAN-GSQ**



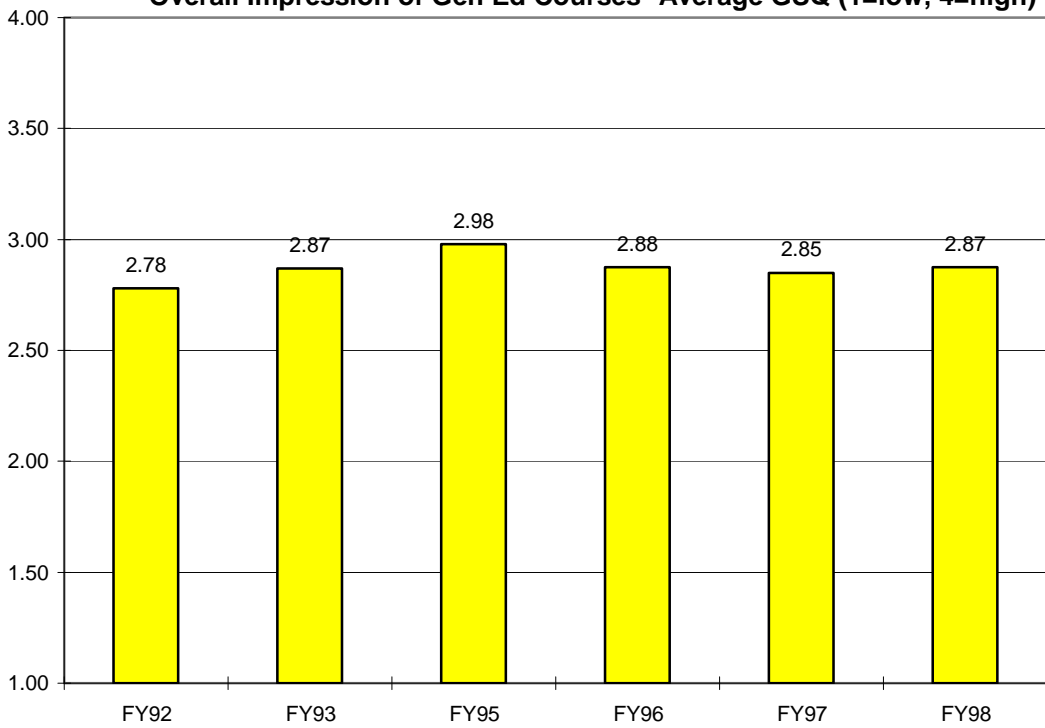
**Using Computers Effectively-Average--ISS & GSQ**



**Overall Impression of Major Courses (1=low, 4=high) Average-GSQ**

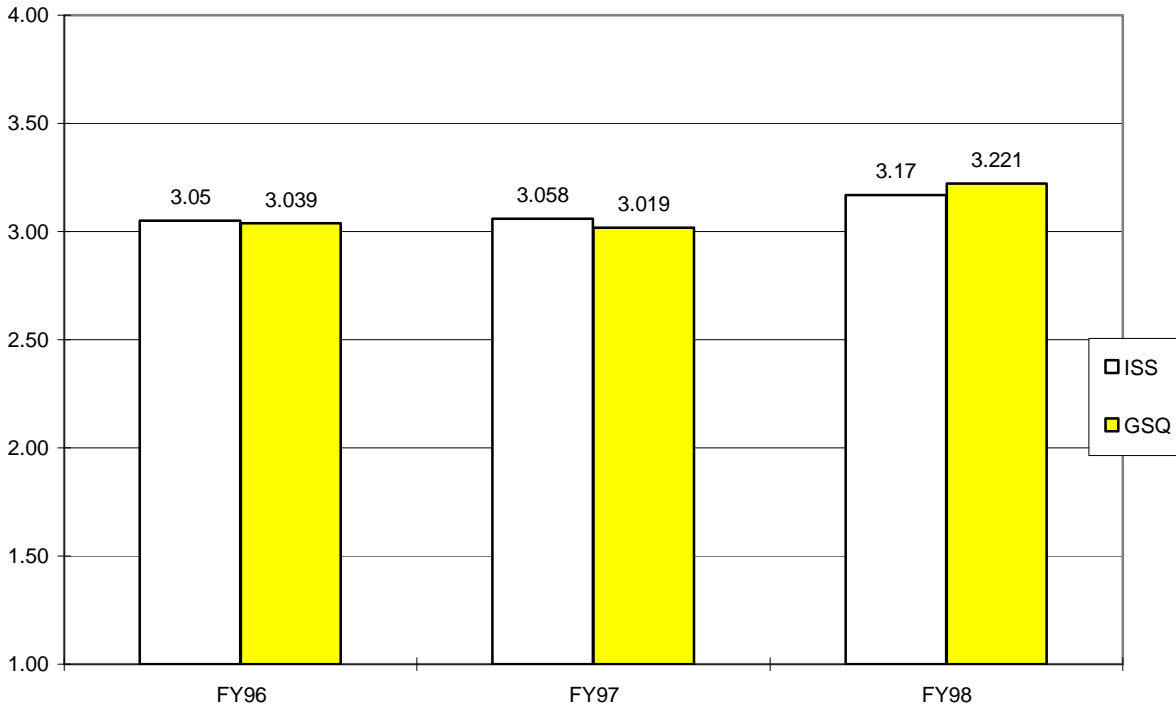


**Overall Impression of Gen Ed Courses--Average GSQ (1=low, 4=high)**



FY 94 Data Not Available

**Applying the Knowledge & Skills in One Discipline to Another  
(1=Very Inadequate, 4=Very Adeqate)**



**Gaining a Well-rounded LAS Education (1=Very Inadequate, 4=Very Adequate)**

